

# Ashland

1,632 sq. ft.  
2 BR / 2 BA



The Ashland is an enlarged version of our popular Honey Creek with the added convenience of a separate laundry/mudroom and sunroom. It also features a master bath large enough for both a walk-in closet and a hot tub. The open-concept great room has an exposed timber ceiling and fireplace. The kitchen has a raised bar and the dining area opens to a gabled sunroom and deck which makes hosting friends a breeze. You'll love the step-saving convenience of this ranch with the heart-warming ambience of an authentic log home.

*A full set of blueprints of this plan is available. Photo and floor plans may differ slightly from actual blueprints.*



**HOCHSTETLER**  
LOG HOMES DONE RIGHT

552 St. Rt. 95, Loudonville, Ohio  
800.368.1015

## Ashland 2

1,632 sq. ft.  
2 BR/2 BA

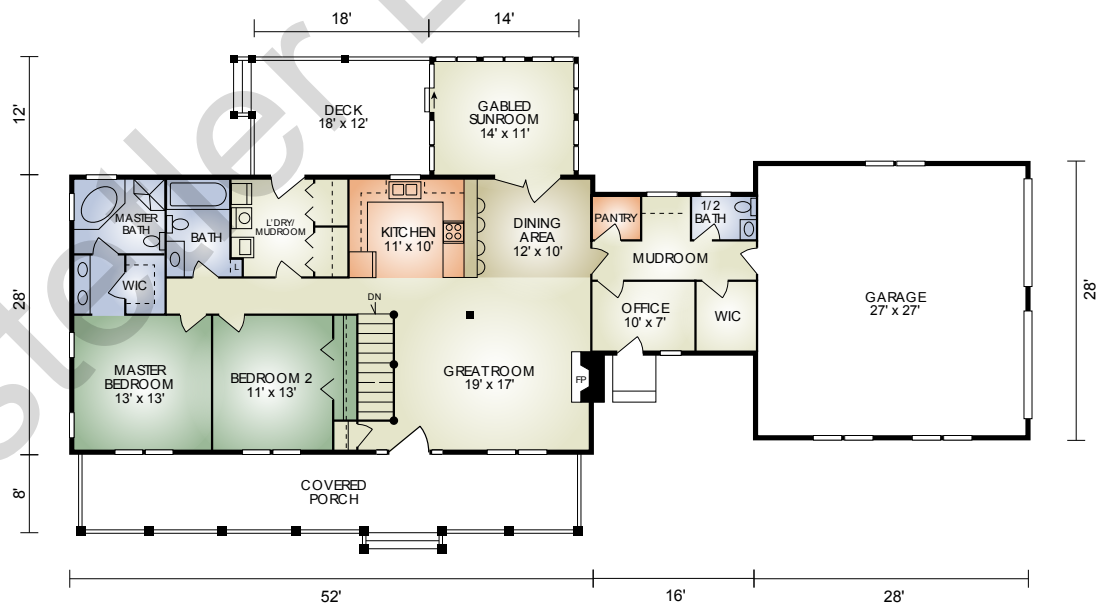
This version of the Ashland home comes with the convenience of a 2 car garage adjacent to the mudroom. This is the perfect “age in place” home or for anyone desiring the beauty and simplicity of a ranch style log home.



## Ashland 3

1,952 sq. ft.  
2 BR/2-1/2 BA

The addition of a 320 SF breezeway provides space for a nice private office, a 1/2 bath, pantry and walk in closet! A 28 x 28 garage provides ample room for the larger truck or space for your ATV. If you desire a traditional ranch home with all the amenities, look no further.



# HOCHSTETLER

LOG HOMES DONE RIGHT

552 St. Rt. 95, Loudonville, Ohio  
800.368.1015