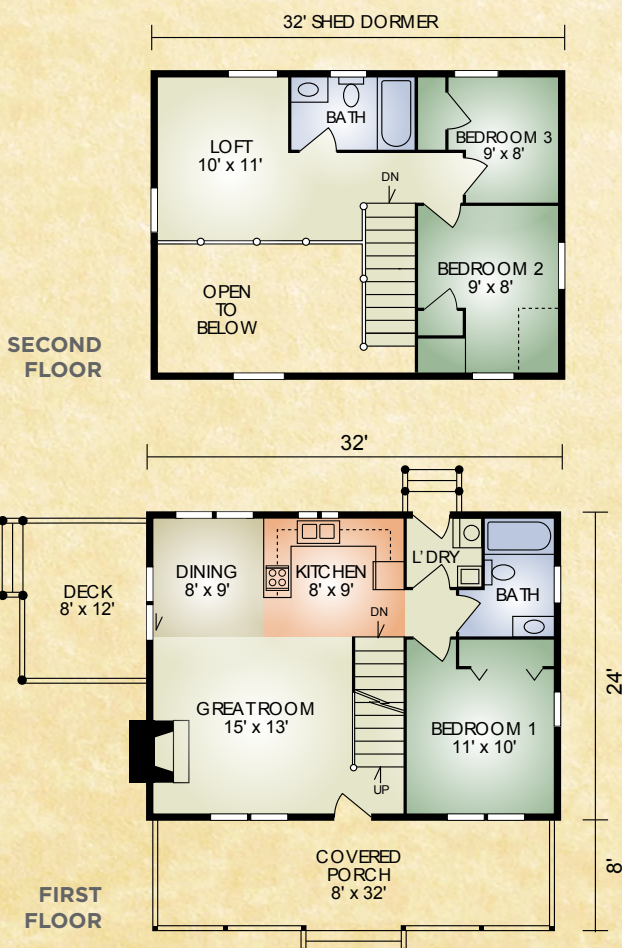


# Cambridge

1,252 sq. ft.  
3 BR / 2 BA



The Cambridge is a very popular traditional log home designed for those who desire a smaller, three bedroom home. It features the popular open-concept great room with exposed timbered ceiling and fireplace, a deck off the dining room, and open loft overlooking the downstairs. Upstairs, the rear shed dormer maximizes the space in the back bedroom, loft and bath. This efficient, step-saving plan also includes a convenient first-floor laundry/mud room accessible from the kitchen or outside. The full-length front porch and double dormers grace the front.

*A full set of blueprints of this plan is available. Photo and floor plans may differ slightly from actual blueprints.*



**HOCHSTETLER**  
LOG HOMES DONE RIGHT

552 St. Rt. 95, Loudonville, Ohio  
800.368.1015

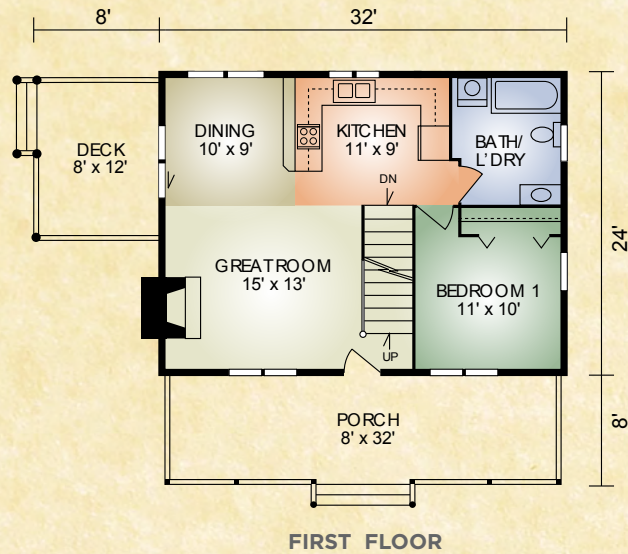
### Cambridge 2

1,252 sq. ft.

3 BR/2 BA

The Cambridge 2 is very similar to the Cambridge, but with a larger kitchen and dining area. The laundry is located in the bathroom. It's the perfect home for that getaway or rental.

*Includes the standard Cambridge second floor plan*



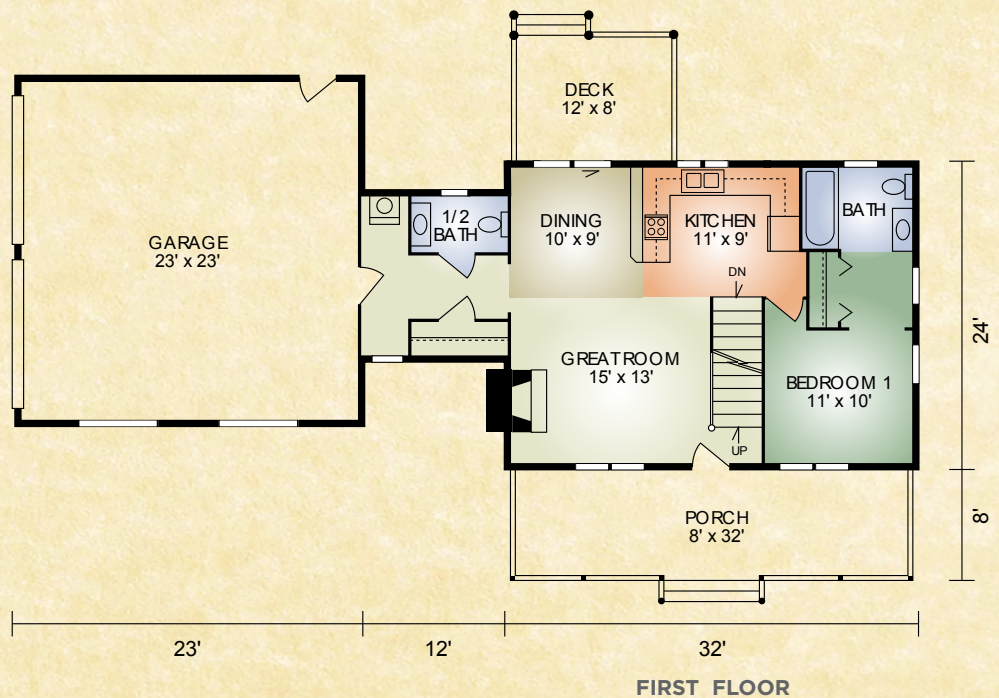
### Cambridge 3

1,496 sq. ft.

3 BR/2-1/2 BA

The Cambridge 3 is the right size for a growing family or those looking to downsize, but in a 3 bedroom home. With the features of the adorable Cambridge, you will appreciate the breezeway with its laundry space, 1/2 bath, pantry and adjoining 2 car garage. Look no further for a classic 3 bedroom cabin.

*Includes the standard Cambridge second floor plan*



# HOCHSTETLER

LOG HOMES DONE RIGHT

552 St. Rt. 95, Loudonville, Ohio  
800.368.1015