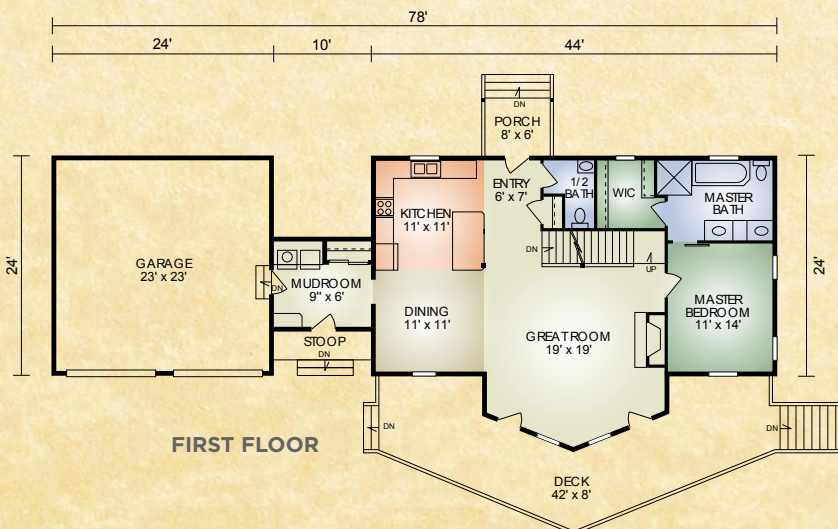
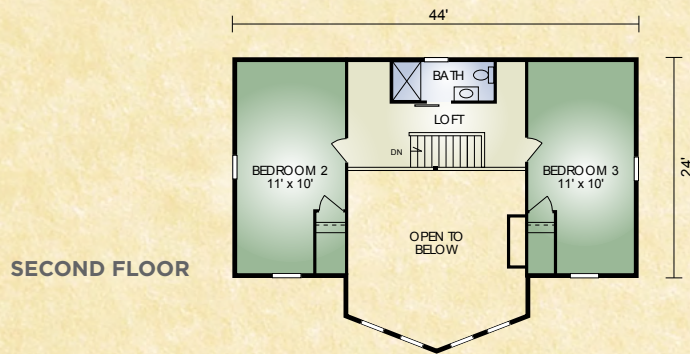


# Eagle Point

1,871 sq. ft.  
3 BR / 2-1/2 BA



Eagle Point is a beautifully designed home with all the amenities in a smaller footprint. The large glass windows in the angled prow brings in the outdoors and captures the view from the great-room. Master suite is on the main-floor with a double sink in the bathroom and a large walk-in closet. Upstairs are two additional bedrooms and full bath. Laundry is in the mudroom, leading to the 2-car garage. Live a life more simple, build the Eagle Point.

*A full set of blueprints of this plan is available. Photo and floor plans may differ slightly from actual blueprints.*



**HOCHSTETLER**  
LOG HOMES DONE RIGHT

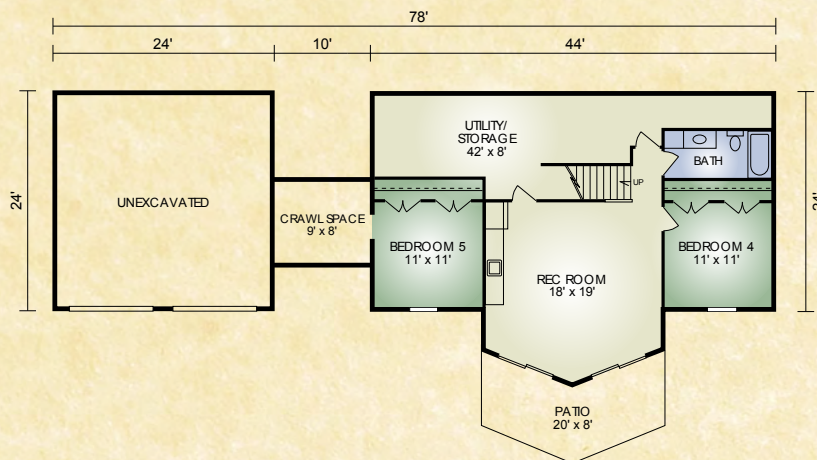
552 St. Rt. 95, Loudonville, Ohio  
Call 800.368.1015

### Eagle Point (Optional Basement)

Additional 804 sq. ft.

2 BR/1 BA

Optional basement adds 804 sq. ft.,  
2 bd, 1 ba, a recreation area, and  
space for storage.



# HOCHSTETLER

LOG HOMES DONE RIGHT

552 St. Rt. 95, Loudonville, Ohio  
800.368.1015