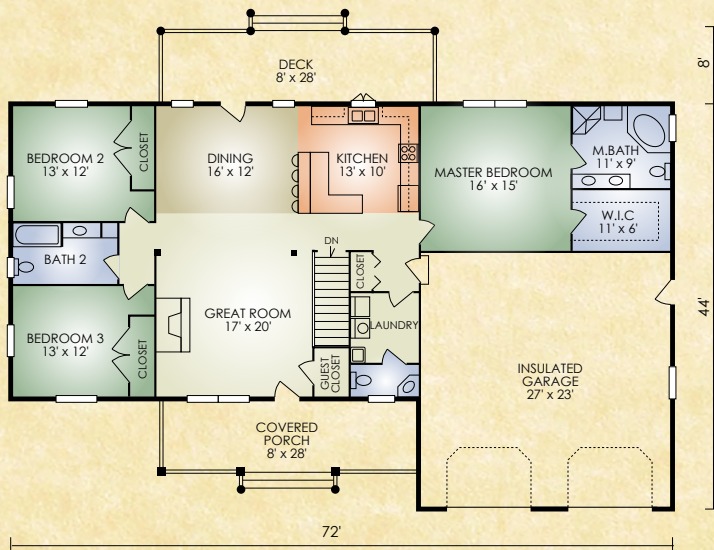


Fairhaven

1,856 sq. ft.
3 BR / 2-1/2 BA



The Fairhaven features the popular open-concept great room with fireplace and exposed timbered ceiling, large master bedroom with adjoining walk-in closet and master bath, and kitchen with island and raised serving counter. Plus, convenient mudroom off the garage, first-floor laundry and rear deck off the dining-kitchen area. This dream ranch is both stunningly beautiful and step-saving practical.

A full set of blueprints of this plan is available. Photo and floor plans may differ slightly from actual blueprints.



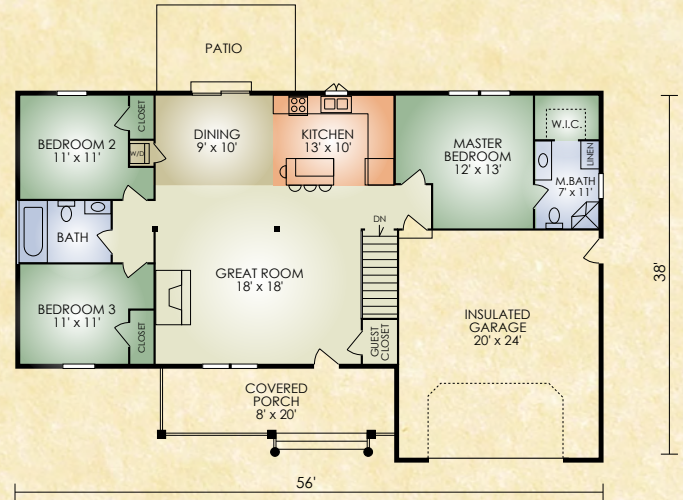
HOCHSTETLER
LOG HOMES DONE RIGHT

552 St. Rt. 95, Loudonville, Ohio
800.368.1015

Fairhaven 2

1,288 sq. ft.
3 BR/2 BA

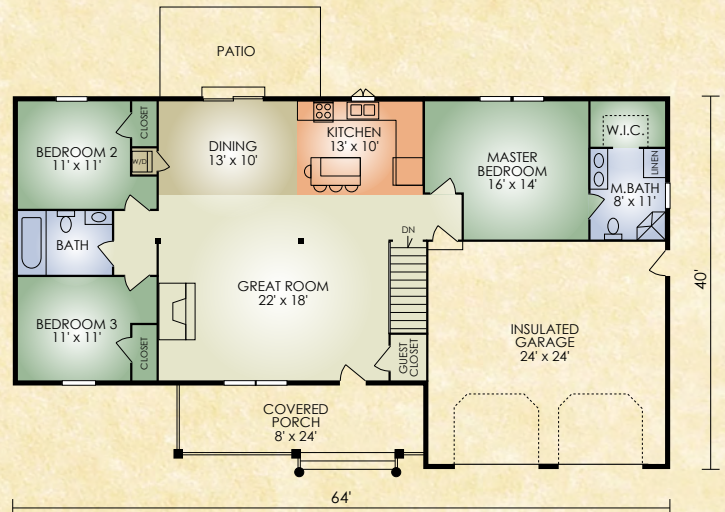
A substantially downsized version of the original Fairhaven the popular Fairhaven 2 features the same basic home design but with slightly smaller bedrooms and garage and without a separate laundry room and 1/2 bath. The open-concept great room, dining area and kitchen are also proportionately downsized. This home offers the economy of a smaller ranch with the step-saving convenience of a single floor plan.



Fairhaven 3

1,504 sq. ft.
3 BR/2 BA

A smaller version of the popular Fairhaven, the Fairhaven 3 features the same basic home design but without a separate laundry room and 1/2 bath. The popular open-concept great room, dining area and bedrooms have been resized. This home offers outstanding value and convenience for the money!



HOCHSTETLER
LOG HOMES DONE RIGHT

552 St. Rt. 95, Loudonville, Ohio
800.368.1015