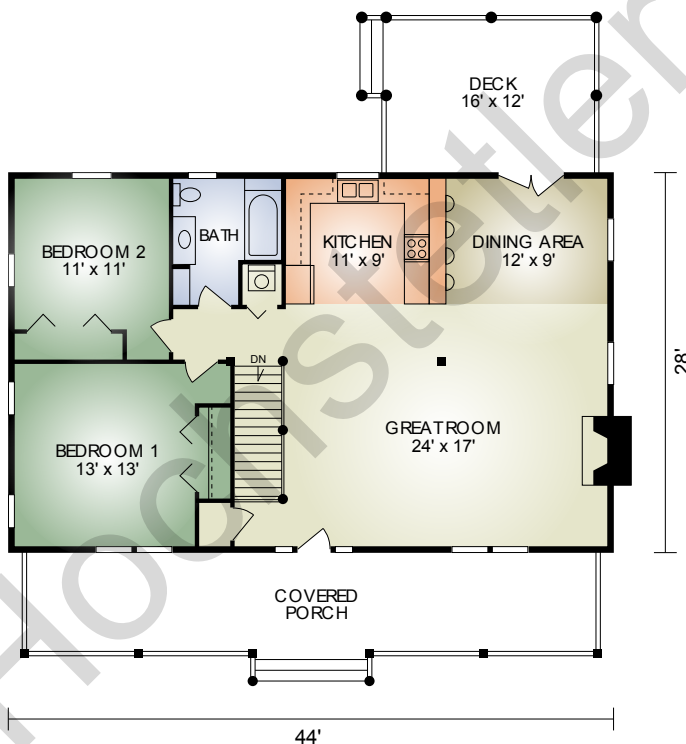


# Honey Creek

1,232 sq. ft.  
2 BR / 1 BA



The Honey Creek is a practical plan designed for those who desire a smaller, two bedroom home with the convenience of a single floor. This home features the popular open-concept great room with exposed timbered ceiling and fireplace, but instead of a master bedroom and master bath, this has two bedrooms. The kitchen has a convenient raised bar and the dining area has French doors leading out to an open rear deck. Outside, a full-length covered front porch offers a relaxing area for both family and friends. So, whether this is your dream home or weekend getaway, you'll love the warm, cozy ambience of this charming ranch.

*A full set of blueprints of this plan is available. Photo and floor plans may differ slightly from actual blueprints.*



**HOCHSTETLER**  
LOG HOMES DONE RIGHT

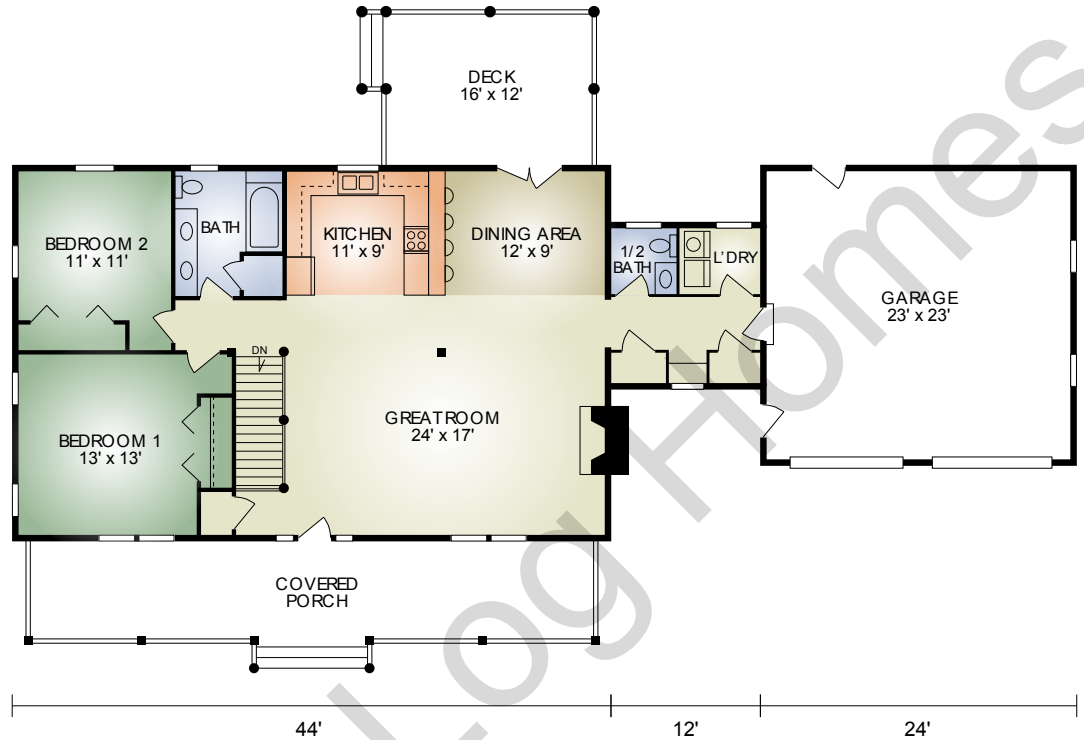
552 St. Rt. 95, Loudonville, Ohio  
800.368.1015

### Honey Creek 2

1,376 sq. ft.

2 BR/1-1/2 BA

With the practical layout of the Honey Creek, this home also features a breezeway and 2 car garage. The breezeway provides ample space for a 1/2 bath, pantry, mudroom with closets and a convenient laundry room. If simplicity and practicality in a ranch style log home is your desire, this is it!



# HOCHSTETLER

LOG HOMES DONE RIGHT

552 St. Rt. 95, Loudonville, Ohio  
800.368.1015