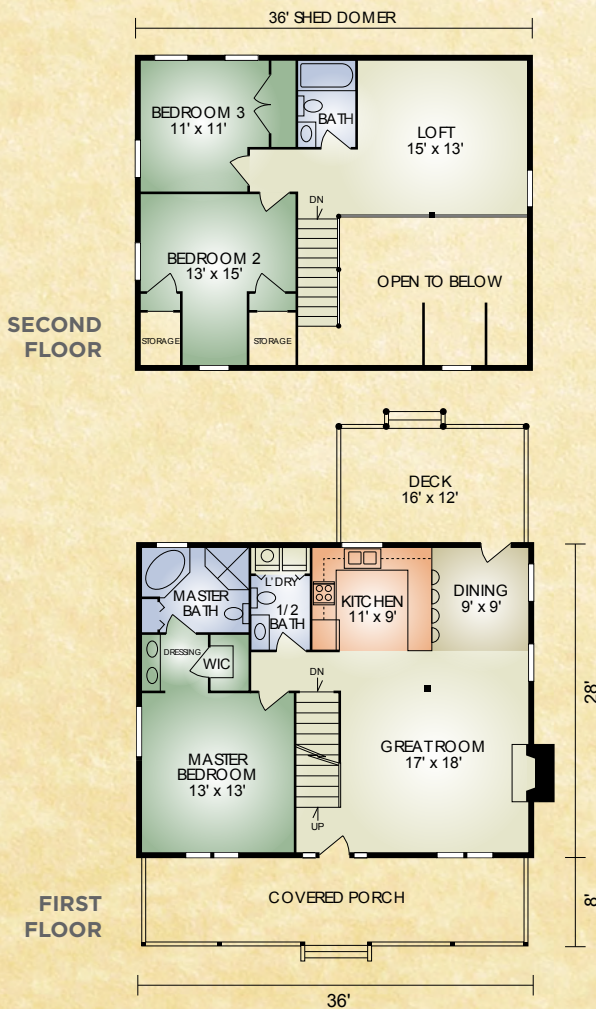


Hudson

1,663 sq. ft.
3 BR / 2-1/2 BA



The Hudson is one of our most versatile floor plans and also one of our most affordable. It has the same room layout as the McKay, in a slightly smaller size. It features the traditional full length front porch, spacious open concept great room with exposed timbered ceiling, master bedroom with adjoining dressing area/walk-in closet, master bath with room for a hot tub and a convenient first-floor laundry with a half bath. Upstairs, there are two more bedrooms with room for an office or sewing room in the open loft. A rear deck conveniently located off the dining area makes hosting family and friends a pleasure.

A full set of blueprints of this plan is available. Photo and floor plans may differ slightly from actual blueprints.



HOCHSTETLER
LOG HOMES DONE RIGHT

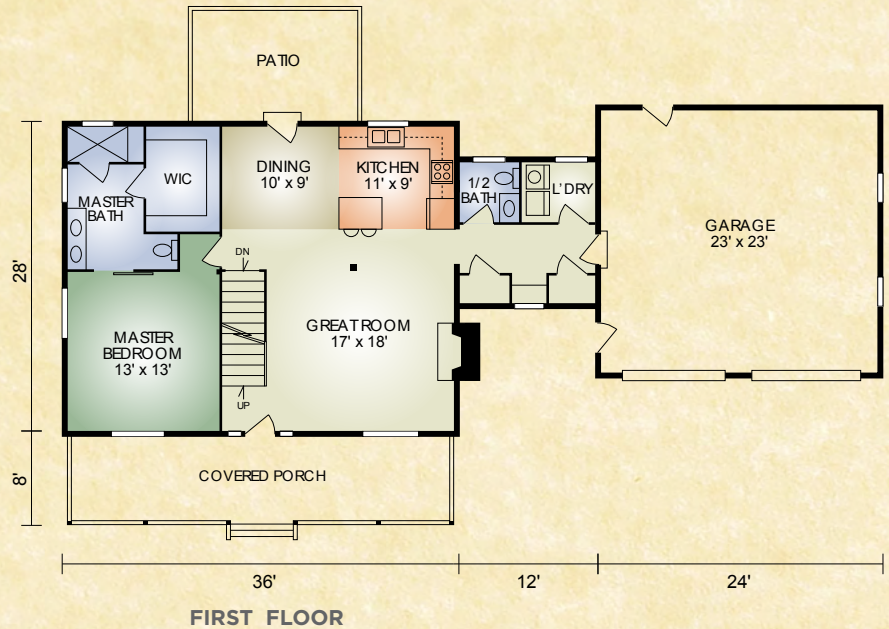
552 St. Rt. 95, Loudonville, Ohio
800.368.1015

Hudson 2

1,870 sq. ft.
3 BR/2-1/2 BA

The popular Hudson 2 is similar to the original Hudson but with the addition of a breezeway and garage on the right side. The breezeway has a convenient pantry, laundry room and 1/2 bath, plus a mudroom and closet for work clothes. The master bedroom has a walk-in shower and large walk-in closet. The open-concept great room, kitchen, and dining area are about the same size as the original Hudson.

Includes the standard Hudson second floor plan

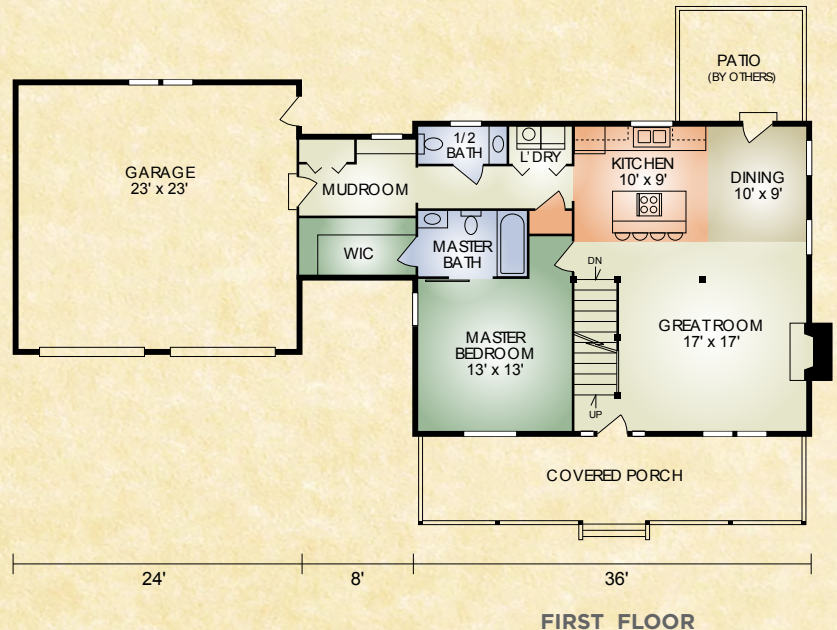


Hudson 3

1,790 sq. ft.
3 BR/2-1/2 BA

The Hudson 3 is a redesigned Hudson on the interior with the addition of a breezeway and garage on the left side. The interior now features a convenient washer/dryer closet, 1/2 bath and pantry. The master bedroom has a larger walk-in closet and the breezeway includes a mudroom and closet for work clothes.

Includes the standard Hudson second floor plan



HOCHSTETLER
LOG HOMES DONE RIGHT

552 St. Rt. 95, Loudonville, Ohio
800.368.1015