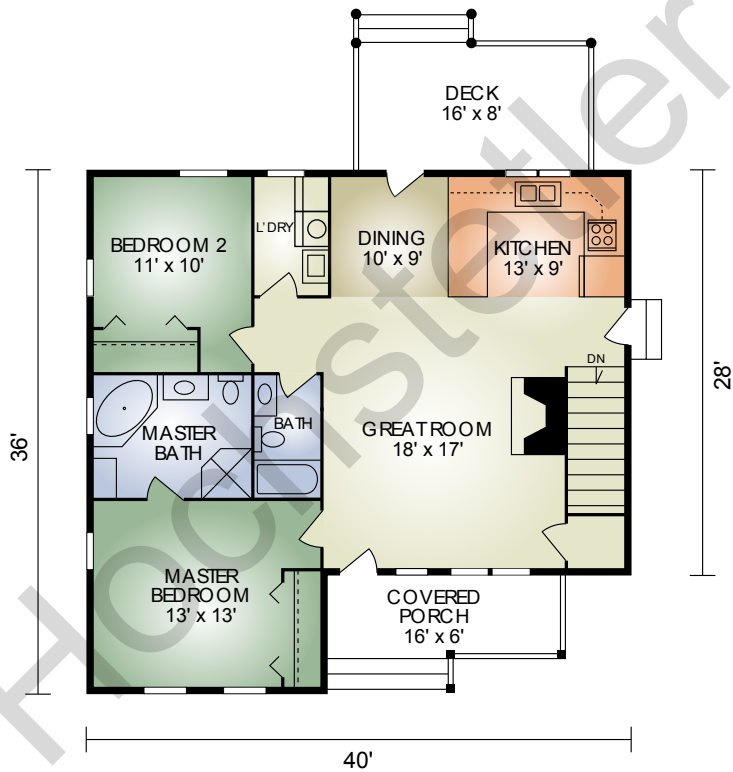


Johnsville

1,248 sq. ft.
2 BR / 2 BA



The Johnsville is a practical ranch for anyone looking for the convenience of a single floor and the beauty of a log home. Features include an open-concept great room with a cathedral ceiling and exposed timbers, master bedroom with oversized master bath, and convenient first-floor laundry. Outside, a 16' timbered front porch greets visitors while a rear deck off the dining area offers a place for the barbeque. A second bedroom can be used as an office. If a basement is not needed, you can eliminate the stairs for additional storage or to enlarge the great room.

A full set of blueprints of this plan is available. Photo and floor plans may differ slightly from actual blueprints.



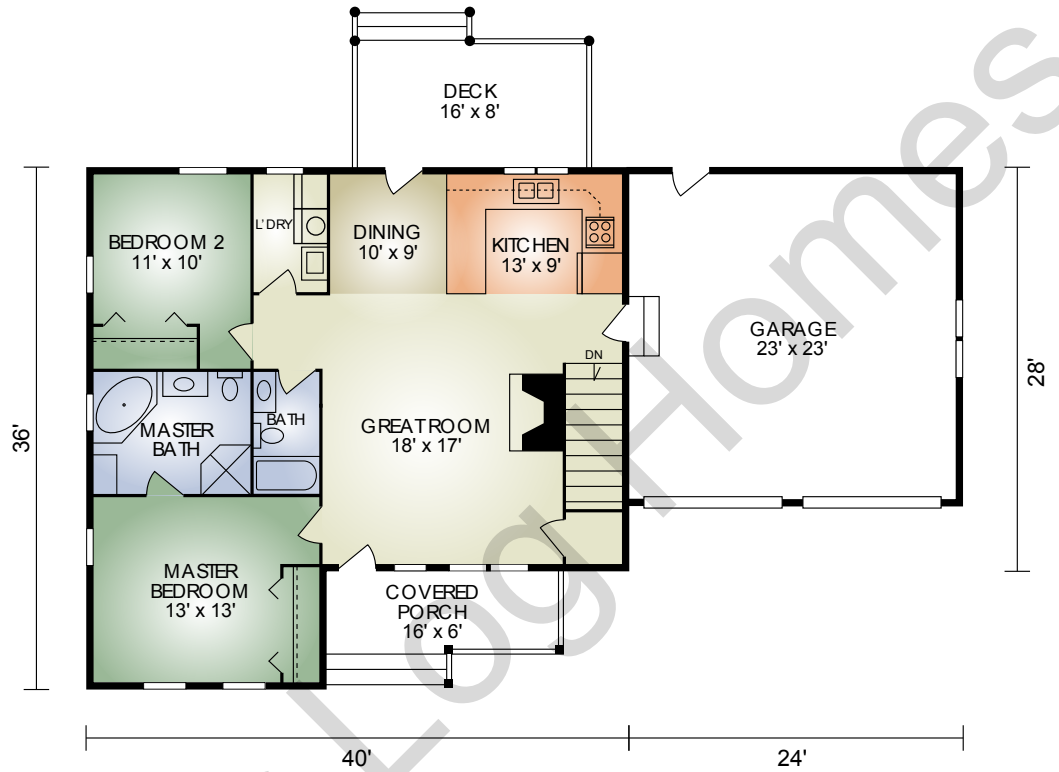
HOCHSTETLER
LOG HOMES DONE RIGHT

552 St. Rt. 95, Loudonville, Ohio
800.368.1015

Johnsville 2

1,248 sq. ft.
2 BR/2 BA

The Johnsville 2 features the amenities of the Johnsville with the addition of a convenient 2 car garage. If a smaller space with all the amenities is your desire, this home has it!



HOCHSTETLER

LOG HOMES DONE RIGHT

552 St. Rt. 95, Loudonville, Ohio
800.368.1015