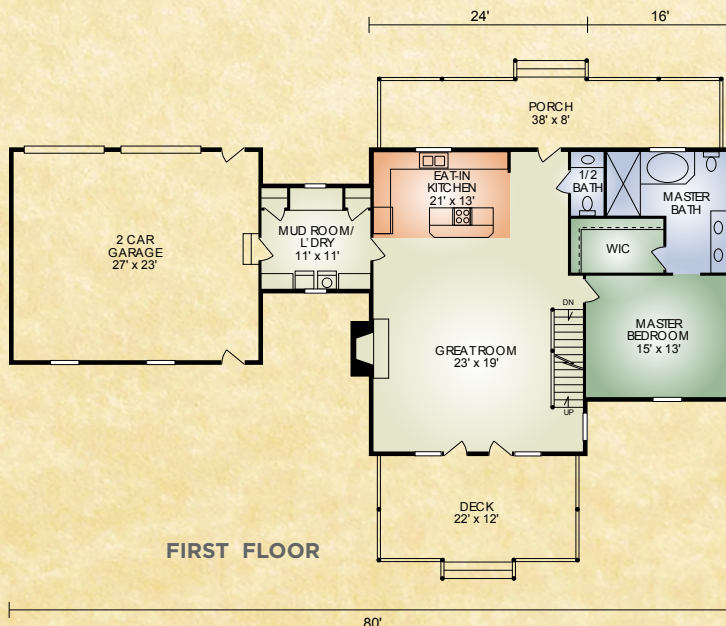
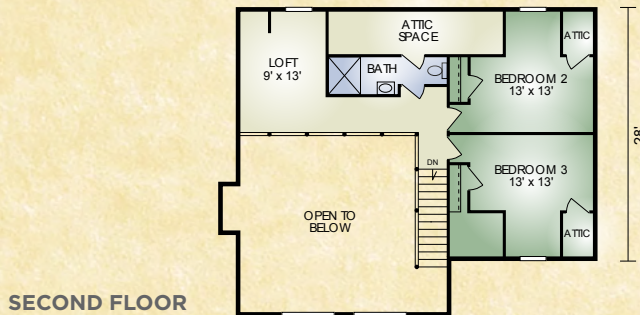


Laurel Ridge

2,029 sq. ft.
3 BR / 2-1/2 BA



The Laurel Ridge is for those seeking the traditional cape-cod style front but wanting expansive glass in the great-room to capture the view. The Master Bedroom and Bath with a large walk-in closet are located on the main floor. Two additional bedrooms, a bath and a loft area are located upstairs. Laundry is in the breezeway which leads to the 2-car garage. Regardless of your setting, the Laurel Ridge will fit.

A full set of blueprints of this plan is available. Photo and floor plans may differ slightly from actual blueprints.



HOCHSTETLER
LOG HOMES DONE RIGHT

552 St. Rt. 95, Loudonville, Ohio
Call 800.368.1015