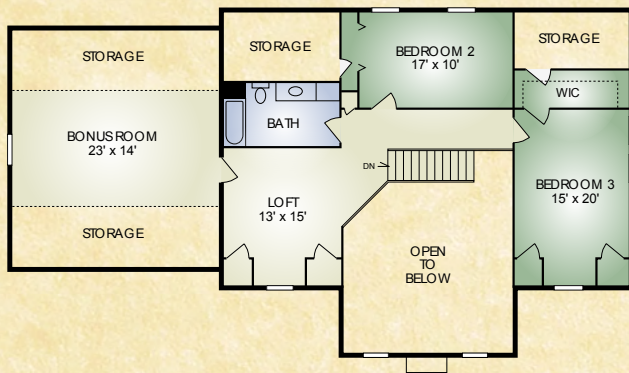
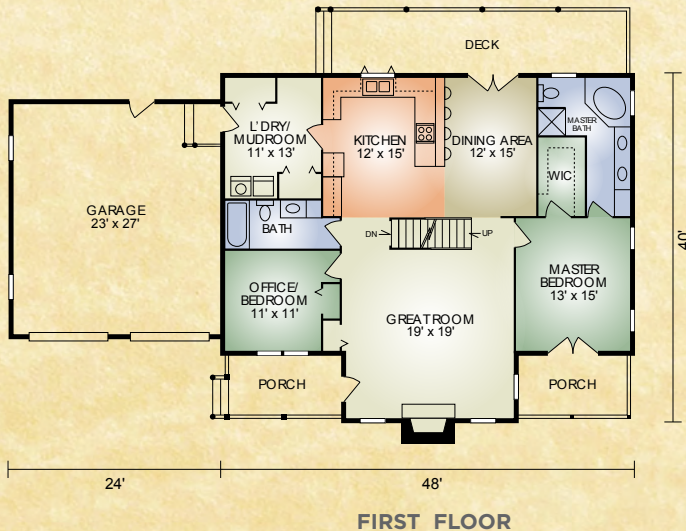


Lexington

2,652 sq. ft.
4 BR / 3 BA



SECOND FLOOR



FIRST FLOOR

The Lexington captures the appealing look of the log home with its soaring chimney flanked by the two dormers and timber framed porches. Designed for today's lifestyle, it offers a nice-sized master bedroom with adjoining walk-in closet and master bath, laundry/mudroom, plus a second bedroom or office, all on the first floor. The spacious great room features a cathedral ceiling with large timber rafters and inviting stone fireplace. Upstairs, there are two more bedrooms (one with a walk- closet), a full bath, loft, and bonus room with plenty of room for the kids' toys, dad's trophies or mom's sewing creations.

A full set of blueprints of this plan is available. Photo and floor plans may differ slightly from actual blueprints.



HOCHSTETLER
LOG HOMES DONE RIGHT

552 St. Rt. 95, Loudonville, Ohio
800.368.1015