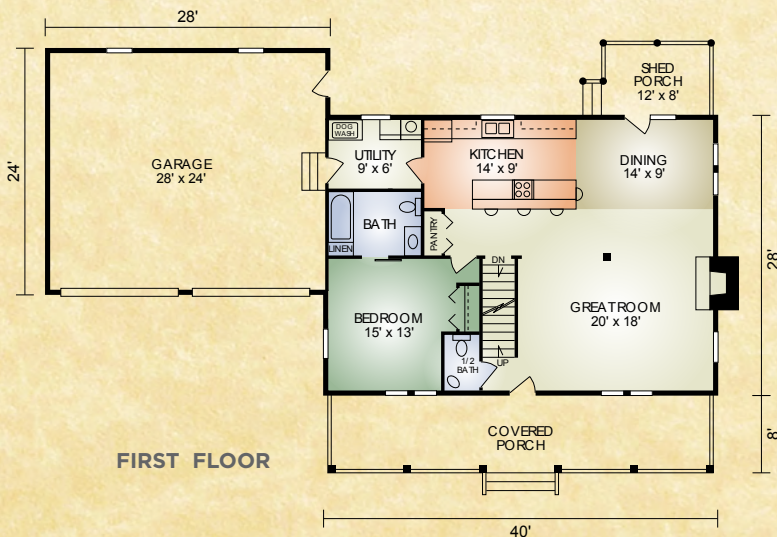
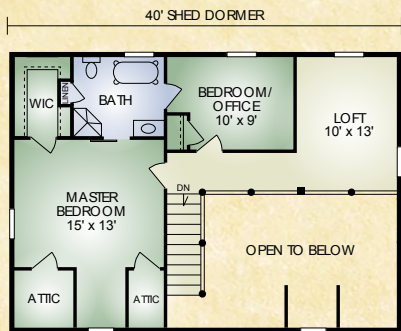


Manchester

1,851 sq. ft.
3 BR / 2-1/2 BA



SECOND FLOOR



FIRST FLOOR

The Manchester is one of our popular home designs and unlike most models, has the master bedroom on the second floor. This home offers the traditional full-length front porch, open-concept great room with exposed timbered ceiling, attached garage, and full-length shed dormer. Plus, it has convenient contemporary touches like the first-floor laundry room with dog wash, master bedroom with walk-in closet and large master bath, and spacious kitchen with pantry. And, for the growing family, a fourth bedroom could be added in the loft. This traditional beauty offers both practicality and convenience as an age in place home.

A full set of blueprints of this plan is available. Photo and floor plans may differ slightly from actual blueprints.



HOCHSTETLER
LOG HOMES DONE RIGHT

552 St. Rt. 95, Loudonville, Ohio
Call 800.368.1015