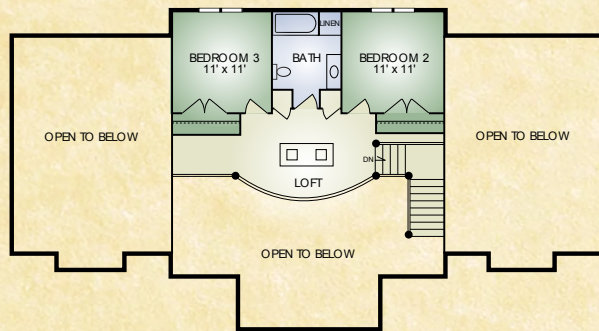
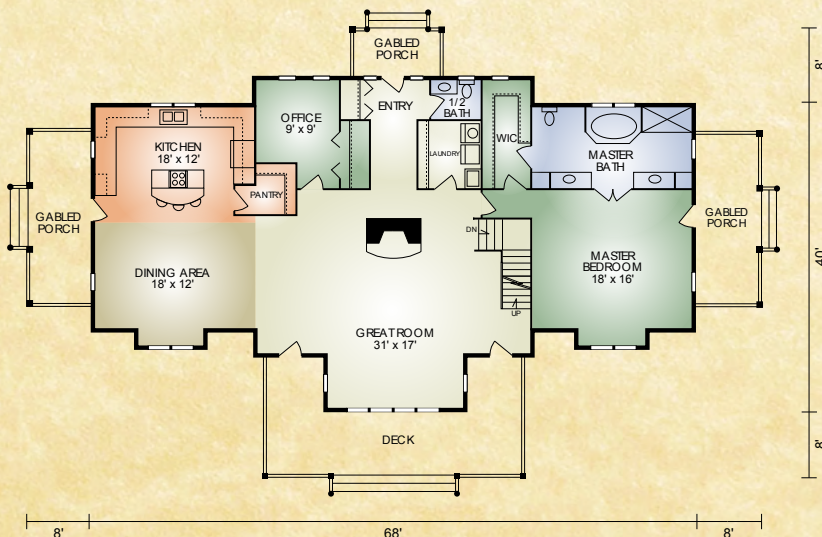


# Meadow View

2,833 sq. ft.  
3 BR / 2-1/2 BA



SECOND FLOOR



FIRST FLOOR

The Meadow View has a dazzling array of "eye-catching" features... both inside and out, starting with the entry opening to the open-concept great room with dramatic centralized fireplace and exposed timbered ceiling, gabled porches on the front and sides, large rear window with expansive deck and timber accents in the gables. It also has convenient contemporary touches like the first-floor office, laundry room, and pantry. The master bedroom with large master bath and adjoining walk-in closet, and spacious kitchen with an island with raised bar, contribute to its appeal. And, upstairs a large open loft offers a dramatic view of the great room below.

*A full set of blueprints of this plan is available. Photo and floor plans may differ slightly from actual blueprints.*



**HOCHSTETLER**  
LOG HOMES DONE RIGHT

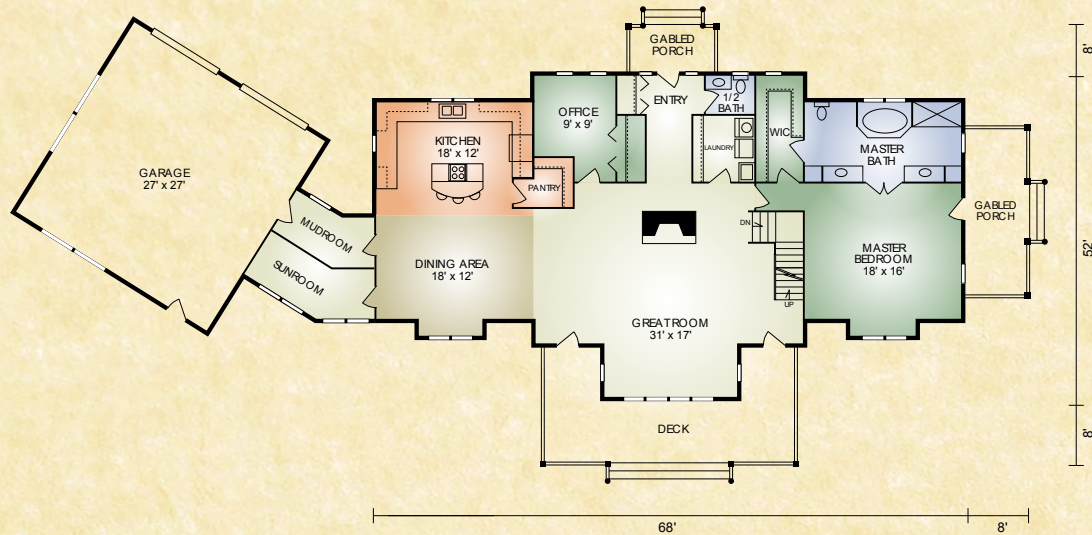
552 St. Rt. 95, Loudonville, Ohio  
Call 800.368.1015

## Meadow View 2

3,100 sq. ft.

3 BR/2-1/2 BA

The Meadow View 2 features a spacious 2-car garage with a breezeway connecting the house. An angled sunroom offers a panoramic view of the backyard.



# HOCHSTETLER

LOG HOMES DONE RIGHT

552 St. Rt. 95, Loudonville, Ohio  
Call 800.368.1015