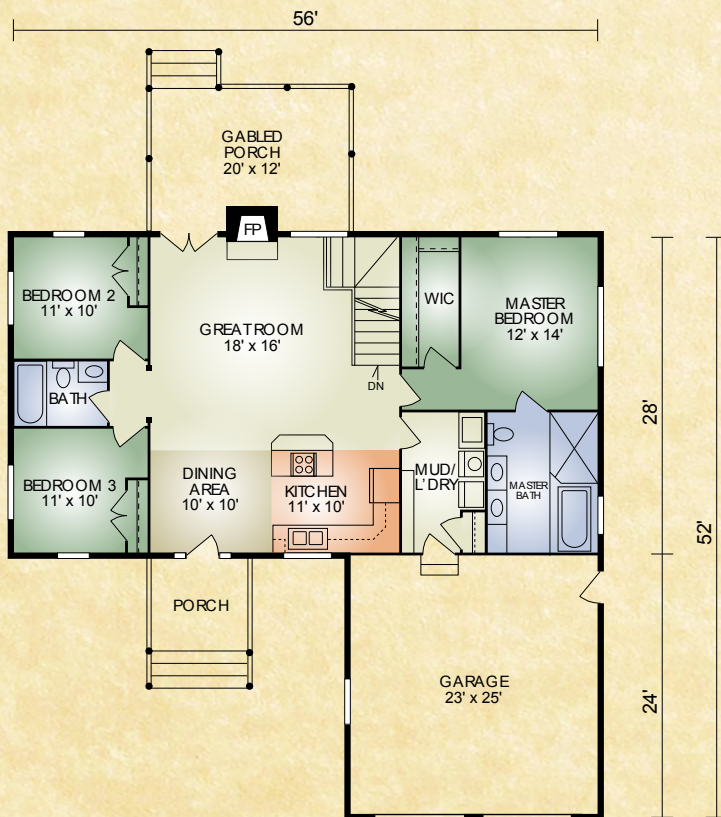


# Mesa Verde

1,568 sq. ft.  
3 BR / 2 BA



The 1,568 sq. ft. Mesa Verde ranch has 3 bedrooms, 2 baths and a 2 car garage. It features the ever popular open-concept great room with stone fireplace and timbered cathedral ceiling and a large master bedroom with walk-in closet and master bath with double-sink vanity. Convenience features include an island with a serving counter in the kitchen and mudroom with washer and dryer. Each room is designed for the utmost in efficiency and practicality. Outside, the covered porch in the back is a gathering spot for friends and family. Although this ranch is somewhat traditional, the logs and timbers give a comfortable, relaxing appeal that only a log home has!

*A full set of blueprints of this plan is available. Photo and floor plans may differ slightly from actual blueprints.*



## HOCHSTETLER

LOG HOMES DONE RIGHT

552 St. Rt. 95, Loudonville, Ohio  
800.368.1015