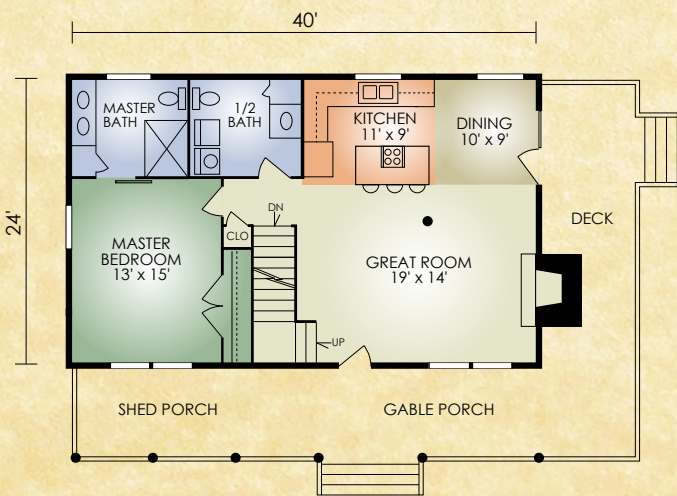
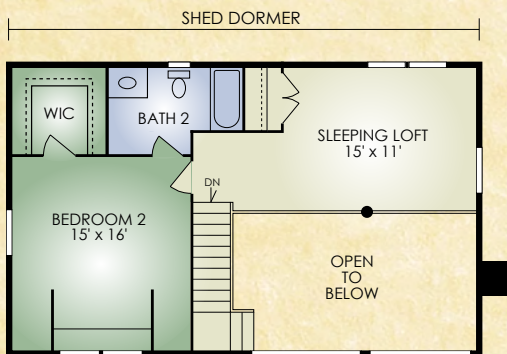


Mountain Laurel

1,608 sq. ft.
2 BR / 2-1/2 BA



If you're looking for a picturesque, 2-bedroom vacation home or simply downsizing, the popular Mountain Laurel may be just right for you. It packs a lot of features into a smaller plan without sacrificing the essentials. The spacious great room has a large stone fireplace and impressive cathedral ceiling with exposed timbers. The second floor is perfect for guests since the bedroom has a bath and walk-in closet. The open loft also has a closet and plenty of room for an entertainment center or sewing room. Outside, the porch offers a place to relax and take in the great outdoors!

A full set of blueprints of this plan is available. Photo and floor plans may differ slightly from actual blueprints.



HOCHSTETLER
LOG HOMES DONE RIGHT

552 St. Rt. 95, Loudonville, Ohio
800.368.1015

Mountain Laurel 2

1,672 sq. ft.

3 BR/2-1/2 BA

The Mountain Laurel 2 is identical to the Mountain Laurel but with the convenience of a breezeway and 2-car garage.



HOCHSTETLER

LOG HOMES DONE RIGHT

552 St. Rt. 95, Loudonville, Ohio
800.368.1015