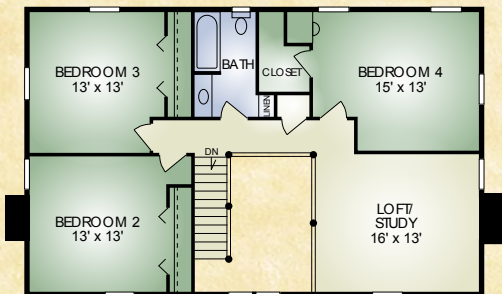
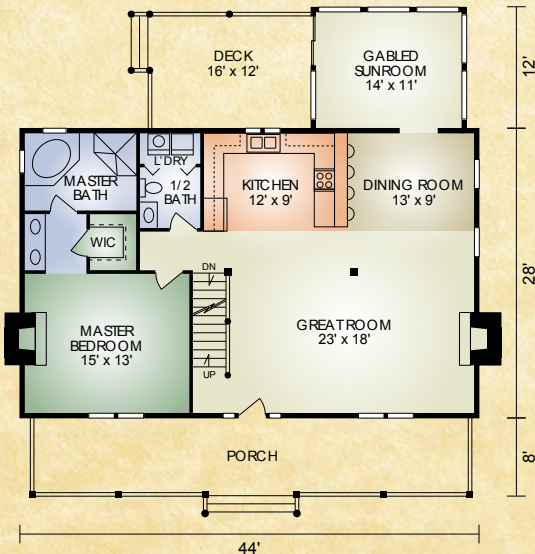


Newbury

2,522 sq. ft.
4 BR / 2-1/2 BA



SECOND FLOOR



FIRST FLOOR

The Newbury is truly an Appalachian style home which harkens back to a time in our nation's history when a log home was a safe and secure shelter against the elements, as well as the host for family meals, tales around the fireplace and finally, a well-deserved night's sleep. It features the exposed timber ceilings, open-concept great room with fireplace, master bedroom with its own fireplace, walk-in closet and master bath, and an inviting gabled sunroom. The second floor includes three bedrooms, a full bathroom and loft area. Outside, large square logs with dovetail joints and the full-length front porch reflect its American heritage.

A full set of blueprints of this plan is available. Photo and floor plans may differ slightly from actual blueprints.



HOCHSTETLER
LOG HOMES DONE RIGHT

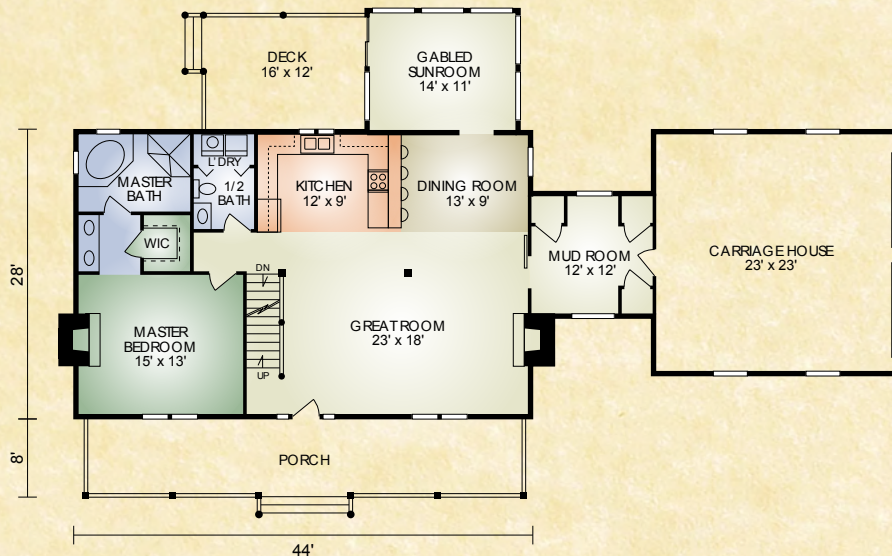
552 St. Rt. 95, Loudonville, Ohio
Call 800.368.1015

Newbury 2

2,665 sq. ft.

3 BR/2-1/2 BA

The Newbury 2 comes with the convenience of a 2 car Carriage House and adjacent mudroom.



HOCHSTETLER

LOG HOMES DONE RIGHT

552 St. Rt. 95, Loudonville, Ohio
Call 800.368.1015