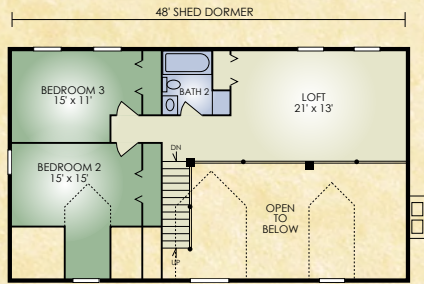
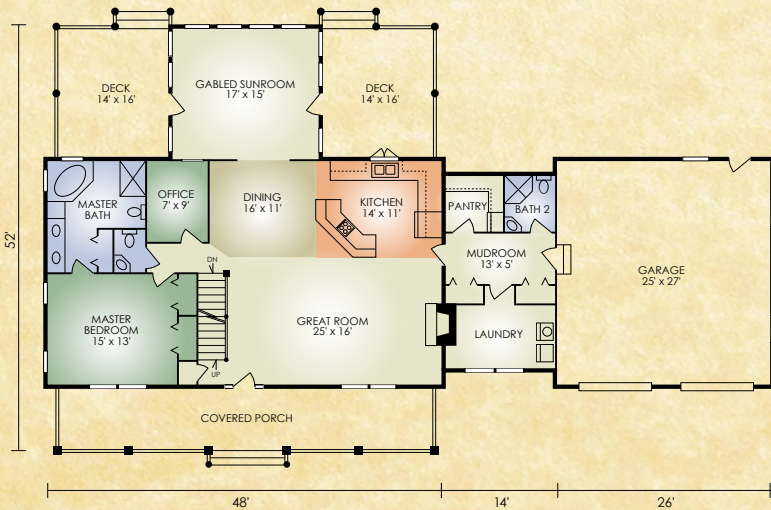


Orchard View

2,817 sq. ft.
3 BR / 3 BA



SECOND FLOOR



FIRST FLOOR

The Orchard View features the popular open-concept great room with fireplace and exposed timbered ceiling, full-length front porch, and full-length shed dormer. Plus, convenient contemporary touches like the first-floor office, laundry room, and pantry. The master bedroom with large master bath, spacious kitchen with an island, and beautiful gabled sun room with flanking decks contribute to its appeal. Upstairs, a large open loft offers an expansive view of the fireplace and great room below. A fourth bedroom could easily be added here if desired. You'll love the step-saving convenience and practicality of this dream home.

A full set of blueprints of this plan is available. Photo and floor plans may differ slightly from actual blueprints.



HOCHSTETLER
LOG HOMES DONE RIGHT

552 St. Rt. 95, Loudonville, Ohio
800.368.1015