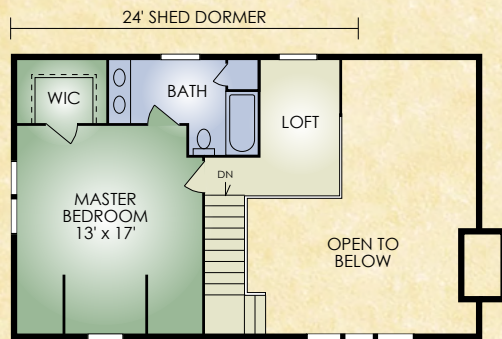


Pleasant View

1,300 sq. ft.
3 BR / 2 BA



SECOND FLOOR



FIRST FLOOR

The Pleasant View is the perfect home for the growing family that desires a traditional log home designed for every member. The exterior features the popular full-length front porch and eye-catching oversized dormer that provides natural light for the living room. The living room also has a large fireplace and cathedral ceiling with exposed timbers. The open-concept kitchen has a serving island and pantry area beside the rear entrance. Upstairs, the master suite includes the bedroom, walk-in closet and private bath. Altogether, this home provides eye-catching appeal in a functional floor plan at an affordable price!

A full set of blueprints of this plan is available. Photo and floor plans may differ slightly from actual blueprints.



HOCHSTETLER
LOG HOMES DONE RIGHT

552 St. Rt. 95, Loudonville, Ohio
800.368.1015