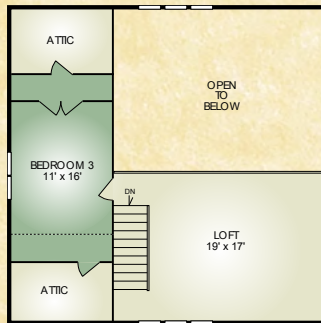
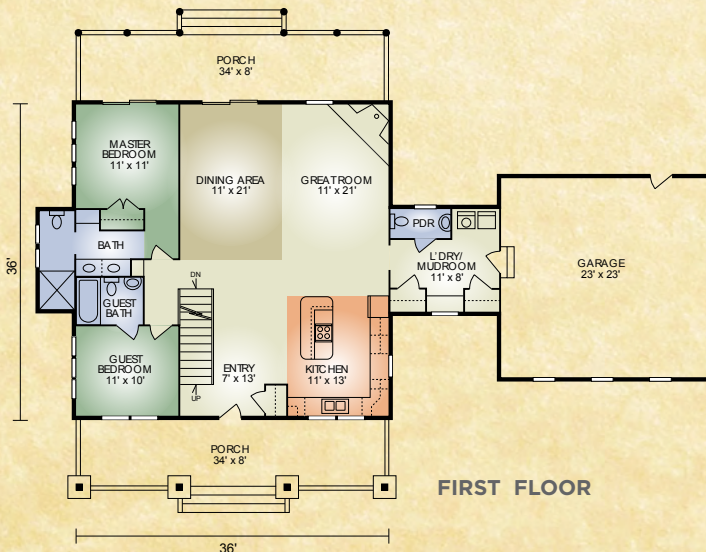


Shenandoah

1,720 sq. ft.
3 BR / 2-1/2 BA



SECOND FLOOR



FIRST FLOOR

The Shenandoah offers 3 bedrooms and 2-1/2 baths in a popular, open concept design. The entry leads into an unobstructed view of the great room, kitchen and dining area. The impressive view is also highlighted by the large, corner-fireplace and towering timbers in the cathedral ceiling. Picture your family gathered around this warm, inviting fireplace on a cold winter evening! The kitchen has an island with serving counter and is only steps away from the laundry/mudroom and dining area. The master bedroom includes a full bath with double-sink vanity, and separate toilet and shower. Outside family and guests will enjoy the views from the full length covered porches - front and rear. If a log home with an arresting appeal of design is what you're after, look no further!

A full set of blueprints of this plan is available. Photo and floor plans may differ slightly from actual blueprints.



HOCHSTETLER
LOG HOMES DONE RIGHT

552 St. Rt. 95, Loudonville, Ohio
800.368.1015