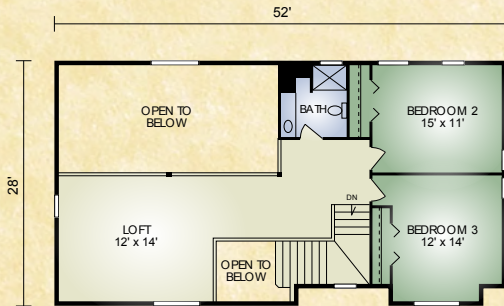
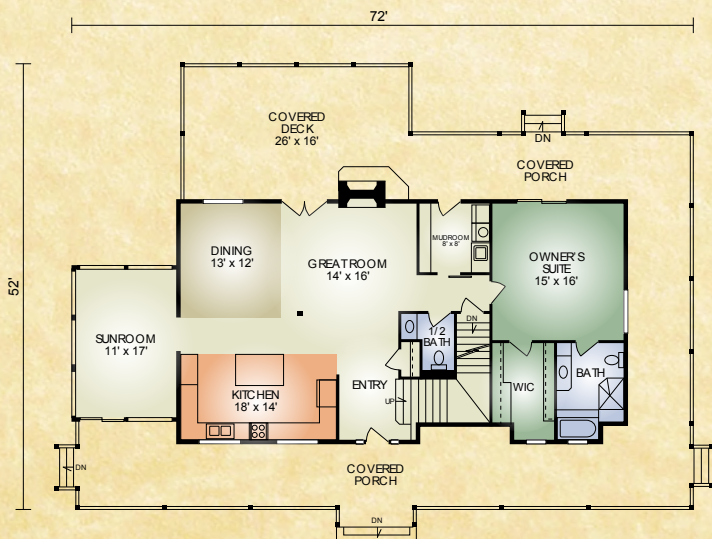


Timbercraft

2,502 sq. ft.
3 BR / 2-1/2 BA



SECOND FLOOR



FIRST FLOOR

The Timbercraft is the epitome of Craftsman style home designed for luxury living at its best. The covered porches are the perfect place to start your mornings. The back porch has its own fireplace and easy access to the great-room and kitchen making it a great gathering place for family and friends. The master suite is on the main floor with laundry conveniently close by. Upstairs there are two additional bedrooms, full bath and loft area with space for an office. Live your dream, build the Timbercraft home!

A full set of blueprints of this plan is available. Photo and floor plans may differ slightly from actual blueprints.



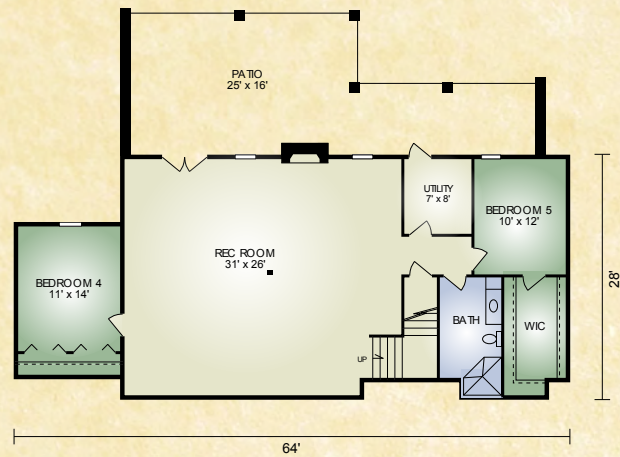
HOCHSTETLER
LOG HOMES DONE RIGHT

552 St. Rt. 95, Loudonville, Ohio
Call 800.368.1015

Timbercraft (Optional Basement)

Additional 1,780 sq. ft.
2 BR/1 BA

Optional basement adds 1,780 sq. ft. 2 bd, 1 ba, recreation room and utility room.

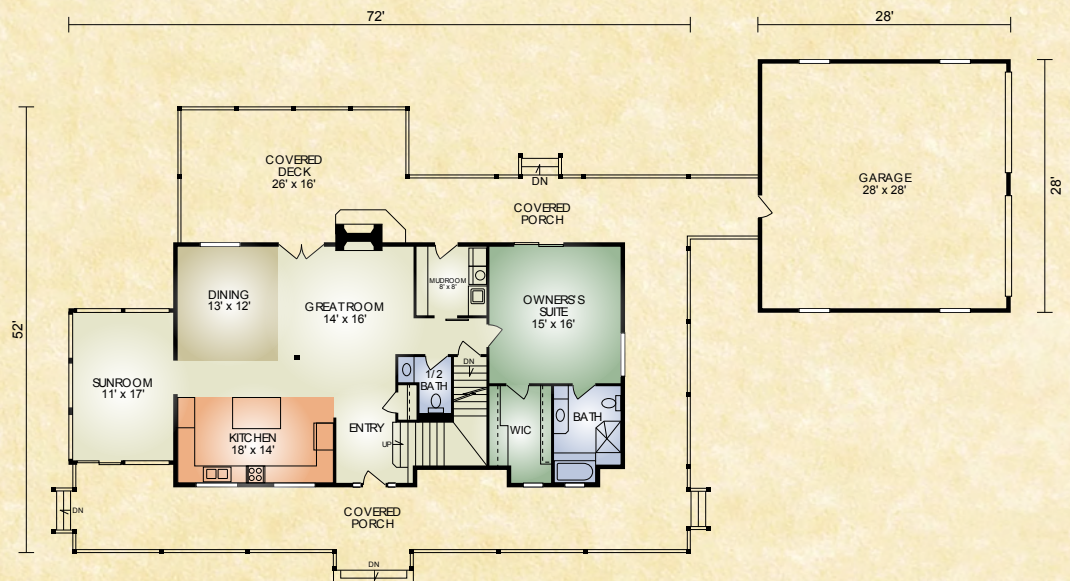


Optional Plan

Timbercraft 2

2,502 sq. ft.
3 BR/ 2-1/2 BA

Timbercraft 2 has similar layout to the original with the addition of an open breezeway and 2-car garage.



HOCHSTETLER

LOG HOMES DONE RIGHT

552 St. Rt. 95, Loudonville, Ohio
800.368.1015