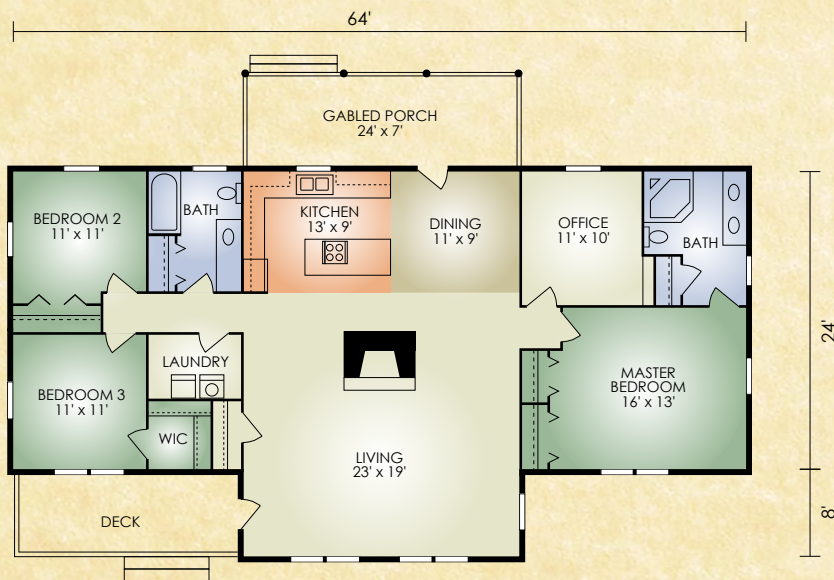


# Timberwind

1,728 sq. ft.  
3 BR / 2 BA



Welcome to the majestic Timberwind! This home has the traditional rugged look of the historic Adirondack homes but with upgrades that will make today's lifestyles more relaxing and carefree. For instance, the master bedroom with its own private bath large enough for a hot tub; a den or office conveniently located next door; and a laundry room off the kitchen. The awe-inspiring great room has a large stone fireplace and exposed timber ceiling. Outside, the rear covered porch is easily accessed from the dining area.

*A full set of blueprints of this plan is available. Photo and floor plans may differ slightly from actual blueprints.*



## HOCHSTETLER

LOG HOMES DONE RIGHT

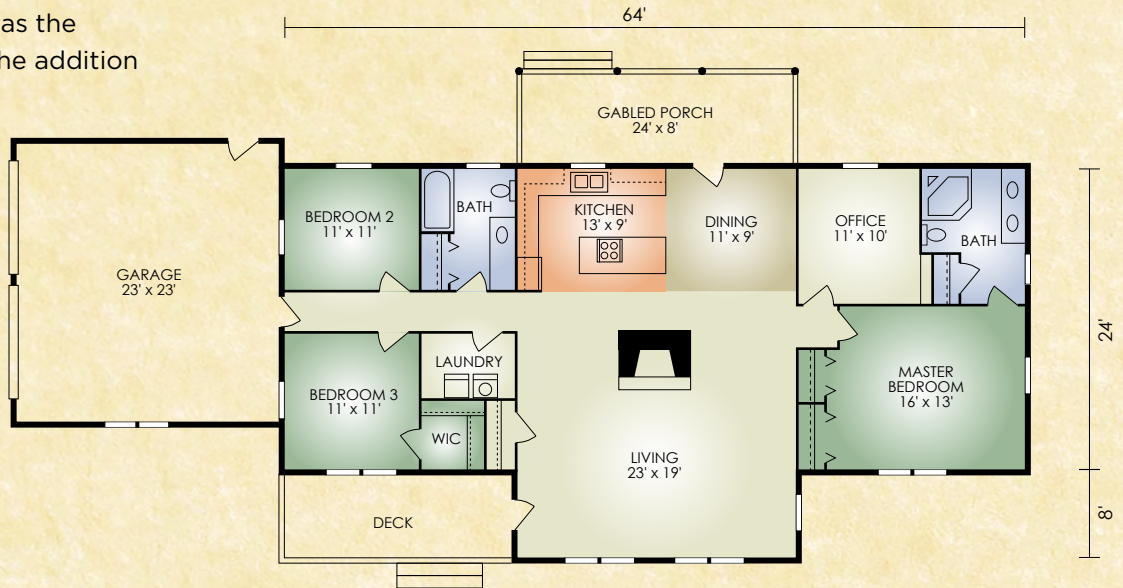
552 St. Rt. 95, Loudonville, Ohio  
800.368.1015

### Timberwind 2

1,728 sq. ft.

3 BR/2 BA

The Timberwind 2 is same as the original Timberwind with the addition of a 2-car garage on the left side.



**HOCHSTETLER**  
LOG HOMES DONE RIGHT

552 St. Rt. 95, Loudonville, Ohio  
800.368.1015