



Mill • Direct News

Living the Log Home Lifestyle

Winter 2019-2020



VIEW FROM THE MILL

By Levi Hochstetler

We are experiencing the mildest fall that I have seen in recent years. It seems we are two weeks behind normal. Generally, we have very few leaves left on the trees by now other than a few oaks. However, this year at October 28 we are having our peak foliage colors.

Wanting to visit us, planning to come for Log Cabin Days, or just wanting to get away? If you are, you may want to book one of the 10 new cabins at Pleasant Hill Lake. They are now taking reservations for next year starting in April. There's no better way to test drive a log home than to rent one of these log cabins that came from us. If you are thinking of renting one for Log Cabin Days you may want to hurry as I'm sure they will go fast. To reserve your cabin go to MWCD.ORG or call 1-855-822-6764. Note: Log Cabin Days is planned for September 18 & 19, 2020.

We are changing our logo! You may soon see the new one on our advertisements.

This Holiday season again we are having a Christmas Open House. It is no coincidence that it is being held between the holidays. We wanted it timed so that folks, like you, can come during Christmas vacation and don't have to take off from work. There is no better time to sit down with one of our designers then now to get your "dreams interpreted" on paper. However, you're also welcome if you are only interested in touring our models and enjoying some good cider along with homemade pastries! Regardless, everyone is welcome! Hope to see you soon!

Hochstetler Log Homes, LTD
552 St. Rt. 95, Loudonville, OH
800-368-1015

Log Home Tour - by Nathan Hochstetler

One of the more exciting and enjoyable benefits Hochstetler employees experience is the opportunity to see the "fruits of our labor." Levi Hochstetler, the founder, invited the Hochstetler "team" to visit several homes that we have created – including the design and the materials supplied for our customer's dream homes.

The first stop on our log home journey was at Mark Bricker's home. Mark had been researching log homes for over 10 years before finally deciding on the Honey Creek floor plan, with a few modifications made by him and our in-house designer. Mark had a contractor come in and do the shell of his home, while he did the finish work himself. Including making his own cabinets with White Pine tongue & groove supplied by us! He is still putting the final touches to his dream home.

Stop no. 2 was at the home of Joe and Kris Sokol. Their log home journey began years ago while on a vacation and staying in a timber-framed cottage with tongue & groove pine walls. Joe, being the creative type, came up with a custom plan that included a unique mix of round and square timbers for the roof system, along with hand-hewn logs for the walls—the rustic look is stunning! It suits their lifestyle and, as Joe said, "it's like being on vacation every day."

Next stop was at the home of John and Mary Goers, just a short drive away. Their home is based on the Fairview with a few modifications. Our in house designer was able to make these modification and, with the help of an experienced builder, the home was completed in 2017. Nestled among the shade trees, with a beautiful view of the



Goer's Home was the 3rd Stop on the Tour

continued on page 6

Log Basics 101: Part II

(continued from Fall 2019 Issue)- by Levi Hochstetler

Milling: After drying the cants, they are now ready to be milled into a profile. Most of the industry uses a 4-sided planer for milling cants into log cabin logs. It is a large planer that has at least 4 and sometimes 6 rotating heads with blades mounted on them. It can take an 8x8 square rough-sawn cant, and mill it into tongue & groove stacking log in just one pass! Dimensions are carefully checked with a dial-indicator to make sure they fit together tightly. Some manufactures use a 4-sided re-saw instead.

After they go through the planer they are graded and are trimmed on both ends, which we call, "end-squared," they are graded per the Log Homes Council grading rules, based on knot size & placement, slope of grain, free from decay and other defects. The grading assures clients that the logs are structurally sound for use in their home. Structural engineers & building departments need them graded, otherwise they have no way of knowing what the load capacity is of the material.

After the logs are graded and milled they are wrapped with lumber wrap and put in storage until the home owner or builder is ready to receive them.

Normally the logs are loaded on semi-tractor trailers and delivered to the job site. A typical log home consists of about 5 loads, but depending on the size of the home can be quite a few more.

Corner joints: The three most common corner joints used today are the **butt-and-pass**, **saddle-notch** and **dovetail**. Structurally, there is no advantage of one type of corner over another. When people ask which corner is the strongest, the answer is "I don't know," but

continued on page 2

PRSR STD
U.S. POSTAGE
PAID
MAILED FROM
ZIP CODE 46711
PERMIT NO. 43

Hochstetler Log Homes, LTD
552 State Route 95
Loudonville, OH 44842
800-368-1015
Change Service Requested

FEATURED FLOOR PLAN

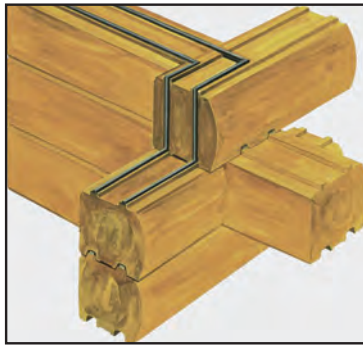
North Cascade

Sq. ft. 1792
3 BR / 2 BATH



The North Cascade home harkens back to the beautiful, rustic look of the Adirondack lodges of yesteryear! With its large, gabled entry, huge stone fireplace and covered front porch it is particularly inviting. The great room has a double-sided fireplace and timbered, cathedral ceiling, opening to the kitchen & dining area. The mud room/laundry is conveniently located between the kitchen and 2-car garage. The master bedroom has a walk-in closet, and master bath with walk-in shower and tub. And, for privacy, is located on the opposite end of the home, away from the other bedrooms. Bedrooms 2 and 3, and guests, share the second bath.

Outside, the front and rear covered porches offer outstanding views of the surrounding landscape - no matter what the season brings. You'll love the "Adirondack" appeal of this plan, but with the convenience of today's log home lifestyle.



Butt-and-Pass

without doubt any of these three corners are many times stronger than any stick-built corner. You should select the corner you prefer or like.

The **butt-and-pass** (see image to left) is the most common corner used. Since it requires the least amount of additional cutting it is also the easiest to build and the most economical. Notice the continual gasket runs not only across the tongues, but also down the butt joints. This is a very important feature in achieving a tight, energy-efficient home.

Saddle-notch logs are normally associated with double round logs, but can be used with D logs, as well.

Saddle-notch gives your home a more western flavor. Some clients prefer them because there is no space between the logs where birds can nest.

Dovetail corners, on the other hand, gives your home an antique look. If you like antiques, this may be the corner for you. Square logs are supplementary with dovetail corners. The chinking, which is generally caulking with sand mixed in, is applied only on the surface instead of between the logs, like in the old days.

Maintenance: As you probably already know the biggest enemies of wood is moisture and the sun. However, the sun, or UV rays, breaks down the finish faster than does moisture. That is why extensive porches and large overhangs, which shield the logs from direct sunlight, are always a good idea. Incidentally, when you stain your logs—buy a quality product and periodically give it a maintenance coat. The extra cost of a quality finish, like Sikkens, is well worth your investment and can save you up to 75% in the long run. It takes the same amount of labor to apply a good quality material as a lesser quality.

Inside a log home there is virtually no maintenance. Once you have the finish of your choice on, there is very little, if any, maintenance.

Wood Species					
Species	R-Value per Inch	Decay Resistance	Shrinkage	Relative Cost	Ease of Installation
Northern White Cedar	1.41	High	Very Low	Moderate	Easy
Eastern White Pine	1.32	Moderate	Very Low	Low	Easiest
Western Red Cedar	1.09	High	Very Low	High	Easy
Cypress	1.04	High	Low	Moderate	Fairly Easy

Wood species: (see the chart above) Probably the most popular log species is the Eastern White Pine. It has several distinct advantages such as high R-value, low shrinkage and easy workability, but the most important is its relative low cost. This species is readily available and is well suited for most of North America. Hands down, of all the least costly materials Eastern White Pine is the best.

Northern White Cedar has slightly more R-value and is more decay-resistant than the white pine. However, it doesn't grow very tall which translates to more splices in your log wall because of the shorter logs. Note: there is a big difference in the quality of cedar. Because of its minimum advantage over white pine, I personally would save my dollars for areas where it makes more impact on my investment.

Red Cedar, like White Cedar, is also more decay-resistant but has less R-value than white pine and costs approximately twice as much as white pine.

Keep in mind that while cedars are more decay-resistant than white pine they still require the same maintenance. 🏠

This story will be continued in the next issue of Mill-Direct News

CUSTOMER TESTIMONIALS

"I was shocked when Levi took me on as his client but felt "Special." I mean, he was the owner of the company and I surely expected to be assigned to a salesperson. So, thank you, Levi, for adopting me. You had a great selection of log cabin plans and you redesigned a plan I really liked to a one floor. And, introducing us to our builder-his crew has done a terrific job. Staff at McKay was especially very helpful also. So thanks to everyone involved-you've done a great job for us."

Pat Hamilton, Ohio

"When we look back on our exciting log home building experience we find ourselves feeling extremely grateful that we chose to work with Hochstetler Log Homes. We were fortunate enough to work with Joseph for our total experience. I don't know how we would have ever managed without him! He helped keep both of us sane! (And that is a big task!) From the moment we met Joseph, he listened to us very carefully to ensure that our log home would be exactly what we hoped for. Joseph was exceptionally knowledgeable, patient and kind. He graciously offered his expert opinion on all matters whenever he was consulted. We thank all Hochstetler staff members for their professionalism, dedications and prompt follow through."

The Greene Family, Ohio

"Building a Log Home isn't an easy task but people at Hochstetler made the process go smoothly. They were always available by phone to answer questions that came up. I ordered a complete package and all the material was there with no missing items. Hochstetler's recommended builder started as soon as I got the foundation in and home was complete in about 6 months."

Alan Doyle, Ohio



Come One, Come All! HOLIDAY OPEN HOUSE at Hochstetler Log Homes



It's that time of year when we wish to invite you to come in and enjoy the casual and relaxing lifestyle that makes a log home so special. Refreshments will be served.

This is also an ideal time to discuss your building plans with our experienced design staff and get a free, no-obligation estimate. Our McKay model is at the intersection of Hwy. 60 & 95, 5 miles north of Loudonville, Ohio. The second model, the Black Fork, is only a 1/2 mile up the hill at 552 Hwy. 95.

Open House days are: December 26, 27, 28, 30 & 31.

Closed on December 23-25 & January 1. We hope to see you!



Visit Our New
& Enlarged Show Room!

The Cabin Store
AT MT. HOPE

7860 State Route 241
Millersburg, Ohio 44654
330-674-1838
Fax: 330-674-0019



Rustic Log Furniture (Aspen, Pine, Hickory)
Lodge Rugs • Custom-Made Furniture
Reclaimed Barn Wood • Barn Beam Mantels

Our Neck of the

Woods

by Bill Dinkins



The log home journey for Loren and Brenda Stayer began auspiciously several years ago when Loren was traveling throughout the state on his job. He searched for many years for secluded hunting property near Columbus, which would also be central to his territory. Finally, he discovered a promising site on the internet - 190 acres, mostly wooded, teeming with wildlife, just south of Newark.

When he first visited the secluded property he was immediately impressed and told Brenda who responded, "We'll buy it, but only if you promise to build me a log cabin on it." And with that the deal was sealed.

They began researching log home companies on the internet, in magazines, and attending log home shows. During a visit to Hochstetler's Log Cabin Days they went on the tour and realized this was the company. They met with the designer, Steve Lykins, and the plans were set in motion. Brenda surprised

Steve with her very detailed scale drawings of the custom home she dreamed of. Together, they formulated a floor plan that suited everyone in the family.

She designed the kitchen with an island and custom hickory cabinets; a laundry room, again with custom cabinets, conveniently located between the kitchen and master bedroom; a first-floor master bedroom with adjoining master bath and walk-in closet; and a sunroom in the rear, which offers an unobstructed view of the wooded ravine and meandering stream below. Loren wanted a place to display his trophy game mounts, which are arranged in the great room on either side of the fireplace. The unique staircase, composed of square posts with rebar in-between, leads up to the loft with a trundle bed, and two bedrooms. A favorite getaway for the kids is the walkout basement, with an oversized bedroom and five beds, including two sets of bunks. They've hosted up to 22 guests on the

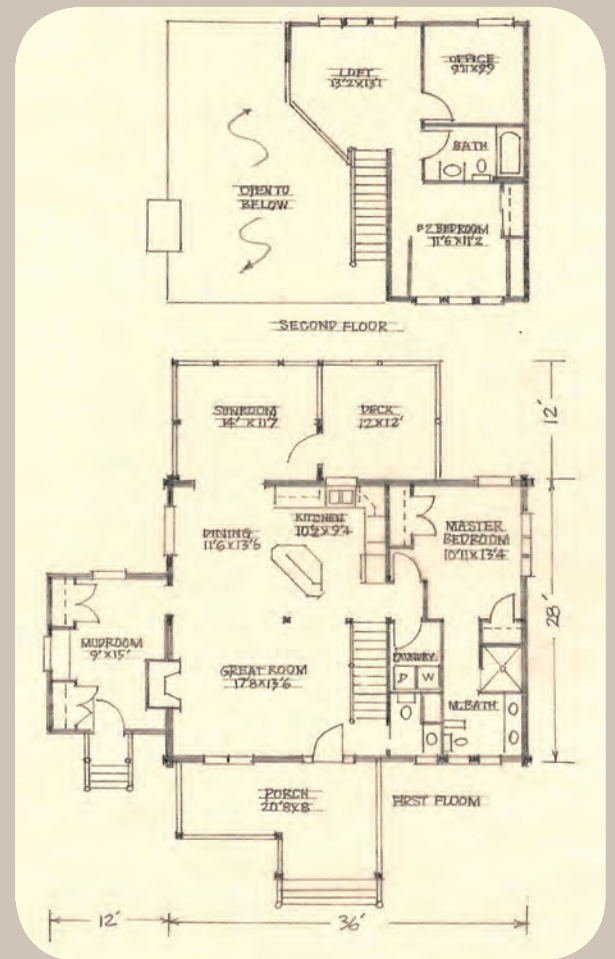
weekends! The adjoining rec room has a large, built-in TV, sectional sofa and ping pong table. Outside, there are trails for the 4-wheelers to explore.

The Stayers' built a pole barn to house their machinery and tractors in July, 2013 and broke ground for their home in August, 2015. In September, the house was under roof and completed in May of '16. The results are unique and impressive. The exposed timbers above the double-gabled entry and the large 8x12 square logs with contrasting chinking give the home an authentic Appalachian charm. A three-window shed dormer also adds a unique decorative touch.

Inside, Brenda's knack for decorating is also evident. The mantle above the

stone fireplace is from a 100-year old barn where Brenda grew up. Upstairs, there is a beautifully restored antique buggy seat in like-new condition. Additional antiques are scattered throughout the home.

Brenda and Loren's attention to detail and planning really emphasizes the benefits of a custom plan. By incorporating her ideas into their family's lifestyle the final plan is truly their dream home! 🏠



For additional information about the home of the Stayers please contact Hochstetler Log Homes at 800-368-1015.



Young's Stop #5



Perry's Stop #4

lake, this provided the perfect setting for our lunch break. Some enjoyed the peaceful setting while relaxing with a sack lunch while others tried their luck fishing in the lake. This is what log home living is all about!

After break, we headed to Mike and Melissa Perry's home. This spacious and beautiful home is based on our popular Sweetwater plan, which offers spectacular views of the surrounding landscape—front and rear! The Perry's wanted a home that would accommodate Mike's parents, so they finished the entire basement, including an outdoor patio, just for them. Melissa is quite proud of her antiques, especially the family heirloom ones, and decorated the lavish interior with many of them. Treasured memories from the past!

John Young's home was one of the more unique homes on our tour and was featured in *Log Home Living* magazine. This spectacular 3000 sq. ft. custom home features a unique blend of timbers and logs that give it a historical Appalachian lodge appeal. The interior is filled with antiques that John has retro-fitted to suit their contemporary lifestyle. John designed his home, and with the help of our design "team" and a contractor, completed his home in 2014.

The last home was a timber-framed home with Oak trusses and beams. Hochstetler provided the massive

timbers, while a timber framer did the mortise-and-joinery work and erected it.

What a joy it was for us to see these homes which we all had a part in creating. It's particular gratifying to see the transformation from a simple two-dimensional blueprint to an awe-inspiring, "dream home". And, to meet the proud owners and hearing their heartfelt, "thank you" was like icing on the cake! 🏠



Hochstetler Log Homes was awarded the contract to provide ten, 2-bedroom rental cabins at Pleasant Hill Lake. Classical Construction from Apple Creek, Ohio has been busy "putting the finishing touches" on the cabins to open the spring 2020 season.

You can make reservations on line at mwcd.org or call 1-855-822-6764 from 10am - 7pm. If you have any questions, you may call the park office at 419-938-7884.

LOGGING DIRECTORY

MOHICAN
LITTLE BROWN INN
MOTEL

MENTION HOCHSTETLER
FOR 15% DISCOUNT

Continental Breakfast • AAA Rated
940 S. Market St., (Rt. 3 S.)
Loudonville, OH 44842
419-994-5525
www.MohicanLittleBrownInn.com

20 Minutes from Hochstetler Log Homes
at I-71 & St. Rt. 97 (Exit 165)

MENTION HOCHSTETLER
LOG HOMES FOR 20% DISCOUNT*

Free Deluxe Breakfast Buffet

QUALITY INN
1000 Comfort Plaza Dr., Bellville, OH
419-886-7000 • www.QualityInnBellville.com
COMFORT INN & SPLASH HARBOR
855 Comfort Plaza Dr., Bellville, OH
419-886-4000 • www.SplashHarbor.com
* Some restrictions may apply.

MOHICAN
LODGE & CONFERENCE CENTER
Operated by Regency Hotel Management for ODNR

96 Room Resort Lodge • Two Pools
Sauna • Dining Room with Lake View

CALL FOR SPECIAL
HOCHSTETLER
PACKAGE*

* Some restrictions may apply.

1098 Co. Rd. 3006, Perrysville, OH 44864
419-938-5411
www.MohicanStateParkLodge.com

LOG HOME FINISHING, LLC

Finishing • Chinking • Media Blasting • Caulking • Preserving

8691 Twp Rd. 323 • Holmesville, Ohio 44633

330-763-1285

Call for a
FREE ESTIMATE

World's Largest Amish Community

We invite you to check out
**Hochstetler Milling's
2 Model Homes** (one at SR
60 & 95 and one a 1/2 mile
east on SR 95), as well as
these fine advertisers.

Register now for our Professional Log Home Builder Workshop

SPRING SPECIAL
\$269
per person

Learn from the experts how to build log homes at our 3-day "Hands - On" Workshop, February 11, 12 & 13th.

- Log stacking and construction demos by instructors - plus "hands-on" workshops
- You will learn what's involved in the process from start to finish that's unique to log home construction
- Free lunch provided 3 days
- Tour of our state-of-the-art kiln and mill facilities
- Tour of our two model log homes

Please fill out this application and return with your payment of \$269. This limited time offer has limited seats available. Each person may bring one guest for an additional \$89. Call 800-368-1015 for more information and ask for Joseph.

Professional Log Home Builder Seminar \$269

Method of Payment: Additional Person \$89

Check (enclosed) VISA # _____ Expiration _____

MasterCard # _____ Expiration _____

Name _____ Phone _____

Address _____

City _____ State _____ Zip _____

Signature _____ Date _____

Are you bringing a guest? Yes No

Return to: Hochstetler Milling, Ltd., 552 Hwy. 95, Loudonville, OH 44842



Large Selection!
"Rustic, but Comfortable"

- HICKORY**
- ASPEN**
- PINE**
- RECLAIMED**
- RED CEDAR**
- HAND HEWN**
- BARN WOOD**
- SLAB TABLES**



Furniture Built On-Site

Bedroom • Dining • Living Room • Occasional

6101 County Road 68
Millersburg, Ohio 44654 **330-674-9709**
www.millersrusticfurniture.com

COLONIAL HOMESTEAD

WOODSHOP HANDTOOLS GUNSMITH



PERIOD FURNITURE & FURNISHINGS (PRE-1900)



144A W. JACKSON ST. • MILLERSBURG, OH • 330-600-9445 • HOURS: MON-SAT 9AM-5PM

EICHER WOODWORKING LLC

CUSTOM KITCHEN & BATH CABINETS



See our cabinetry at Hochstetler's McKay Model Home!



522 CR 2575, LOUDONVILLE, OH 44842

419-994-1098

EICHERWOODWORKING.COM | INFO@EICHERWOODWORKING.COM

See Mill-Direct News back issues at www.HochstetlerLogHomes.com • 7

CABIN FEVER

“Wild Ride” as told to Bill Dinkins by Levi Hochstetler

My dad, Edwin, told me about a harrowing experience he had while growing up, when things could have turned out much differently, but luckily someone was looking out for him that summer day.

We lived in the country and Dad had been visiting with friends and was heading home on a young horse named Babe. It was only a 2-mile ride on a lightly-traveled country road so he felt safe and didn't bother with a saddle. Dad was an experienced rider and felt a pair of reins was all he needed. The melodic clip-clop of Babe's hooves were particularly relaxing and a light breeze added to the enjoyment of the ride. Just him, his horse and the solitude of nature ... it added up to a perfect day!

That is until a neighbor's dog burst on the scene. Buster was an ill-tempered mutt that all the kids avoided like the plague. Unfortunately, his owners didn't keep him chained up, so Buster was free to terrorize the neighborhood. As Dad approached the Miller's place he became a little apprehensive and gripped the reins a little tighter. The day seemed to change from one of peace and quiet to one of ominous overtones. The sky got darker, the birds stopped singing and even the horse seemed a little squeamish.

In the distance, Buster had already noticed these “strangers” on his road and raced towards them, barring his fangs and growling relentlessly. His owner yelled out for the dog to stop but it was too late. Babe reared up, Dad lost his grip on the reins but luckily managed to hold onto the horse's neck and soon was hanging upside down, looking at Babe face-to-face! With eyes peeled back in fright the horse bolted down the gravel road, Dad hanging on precariously and Buster in hot pursuit.

Finally, the dog gave up the chase, but not 'til Dad had breathed a giant sigh of relief.

When Dad and his brothers got home they vowed to “get even.” That dog had to go. They loaded their trusty 12-gauge and proceeded to walk back down the road to “settle things.”

“Let's see how Buster likes buckshot,” Jonas muttered. As they approached the house Buster bolted towards them, ears laid back in attack mode. Big mistake! Jonas took careful aim and fired. Buster dropped! The boys turned and ran, but as they looked back that malicious mutt was crawling back home.

Next day the owner came over to investigate and gave them the dreadful news. Buster was going to be okay, but there was a substantial vet bill to be paid. When Dad's father, Levi, heard about this, he made the boys pay the bill...all \$200 worth! 🏠



MHP Custom
Hardwood Flooring
By Mt Hope Planing
Custom Millwork

www.craftedino.com/mhp

Toll Free (888) 549-2524 | 7598 TR 652 | Millersburg, Ohio 44654

- Large Selection of Woods and Sizes
- Custom Hand-Planing and Distressing
- Numerous Stain and Finish Options
- Installation Available!

RURAL 1st

Tailored lending to fit your needs
Call today!

Mansfield 419.747.4111 | Wooster 330.264.2451
Sugarcreek 330.674.0700 | Oberlin 440.775.4028