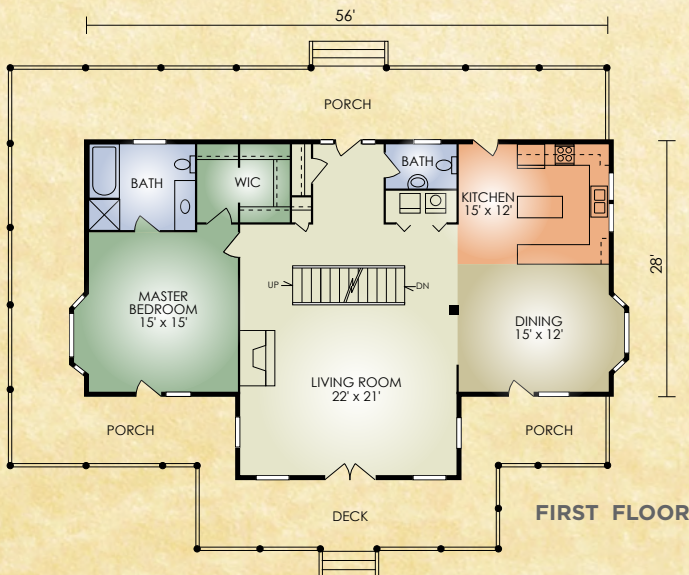
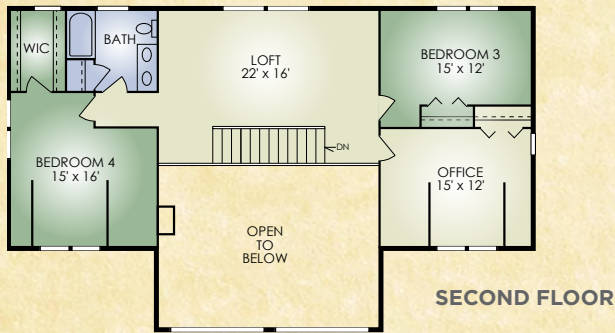


Birtchfield

2,894 sq. ft.
3 BR / 2-1/2 BA



There's so much to like about the majestic Birtchfield, it's hard to decide where to start. From its eye-catching exterior to its rugged and imposing interior, it is simply breathtaking. Beginning with the great room with the stone fireplace and exposed timber ceiling and leading to the kitchen/dining area, this home is wellplanned and comfortable for family and guests. The spacious master bedroom has its own private bath and supesized walk-in closet. The kitchen has a food-prep island and is convenient to the dining area and laundry closet. Upstairs, there is a second bedroom with bath and walk-in closet in addition to an office and third bedroom. A generous-size open loft is perfect for that entertainment center.

A full set of blueprints of this plan is available. Photo and floor plans may differ slightly from actual blueprints.



HOCHSTETLER
LOG HOMES DONE RIGHT

552 St. Rt. 95, Loudonville, Ohio
800.368.1015