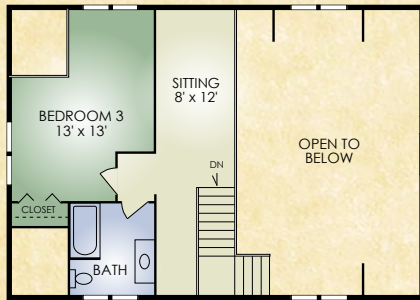


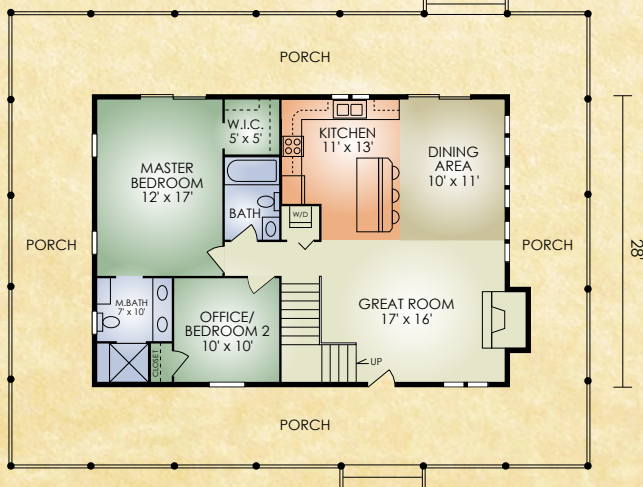
# Creekstone

1,603 sq. ft.  
3 BR / 2 BA



SECOND FLOOR

40'



FIRST FLOOR

The Creekstone is the epitome of what log home living is all about. It features a full wrap-around porch and a spectacular open-concept great room with large stone fireplace and a cathedral ceiling highlighted with exposed Douglas Fir timbers. A first-floor laundry near the kitchen, master bedroom and bath with double sink and a second bedroom/office complete the convenient main floor. Upstairs, a third bedroom and bath offer isolated privacy. Plus, the sitting room with open loft provides additional space in this beautiful upscale home.

*A full set of blueprints of this plan is available. Photo and floor plans may differ slightly from actual blueprints.*



**HOCHSTETLER**

LOG HOMES DONE RIGHT

552 St. Rt. 95, Loudonville, Ohio  
800.368.1015