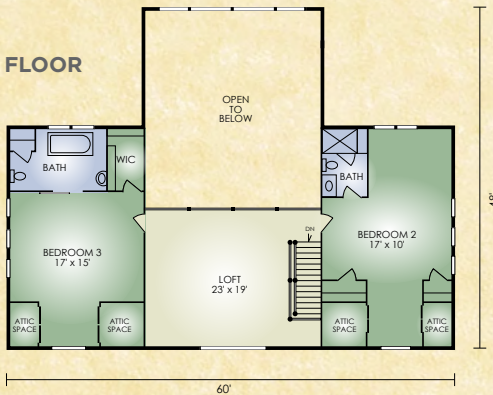


Eagle Feather

4,130 sq. ft.
3 BR / 3-1/2 BA



SECOND FLOOR



FIRST FLOOR



The Eagle Feather is a home that harkens back to the classic Adirondack styles of earlier times but with the convenience and functional updates of today. A gabled front porch welcomes guests to the spacious foyer and open-concept great room with exposed, timbered ceiling and towering stone fireplace, while a covered rear porch and deck offers an unobstructed view of nature's beauty. The master bedroom features a large walk-in closet, and master bath with spacious walk-in shower, tub, linen closet, and double sinks. A first-floor pantry/laundry room and adjoining mudroom, plus a sizable serving island in the kitchen, provide step-saving convenience and practicality. Upstairs, there are two bedrooms; one with a full bath and walk-in closet and the other with a smaller full bath.

A full set of blueprints of this plan is available. Photo and floor plans may differ slightly from actual blueprints.



HOCHSTETLER
LOG HOMES DONE RIGHT

552 St. Rt. 95, Loudonville, Ohio
800.368.1015

Eagle Feather 2

4,130 sq. ft.

3 BR/3-1/2 BA

The Eagle Feather 2 is similar to the original Eagle Feather but with the addition of a 28x28 garage on the left side.



HOCHSTETLER

LOG HOMES DONE RIGHT

552 St. Rt. 95, Loudonville, Ohio
800.368.1015