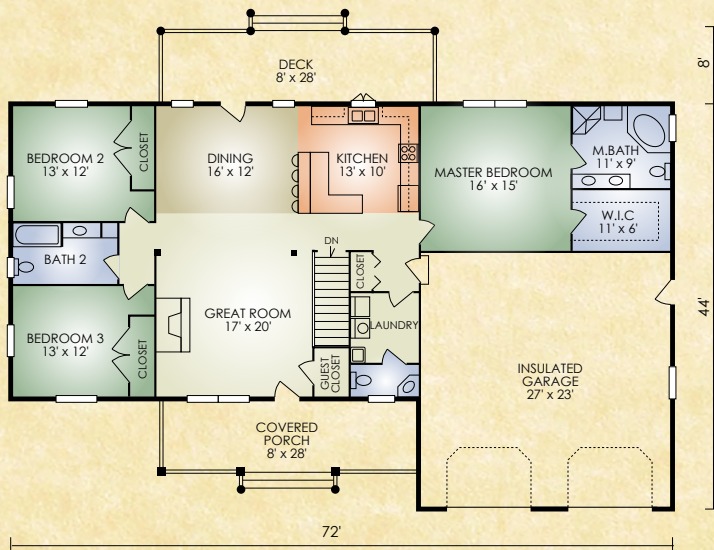


# Fairhaven

1,856 sq. ft.  
3 BR / 2-1/2 BA



The Fairhaven features the popular open-concept great room with fireplace and exposed timbered ceiling, large master bedroom with adjoining walk-in closet and master bath, and kitchen with island and raised serving counter. Plus, convenient mudroom off the garage, first-floor laundry and rear deck off the dining-kitchen area. This dream ranch is both stunningly beautiful and step-saving practical.

*A full set of blueprints of this plan is available. Photo and floor plans may differ slightly from actual blueprints.*



## HOCHSTETLER

LOG HOMES DONE RIGHT

552 St. Rt. 95, Loudonville, Ohio  
800.368.1015

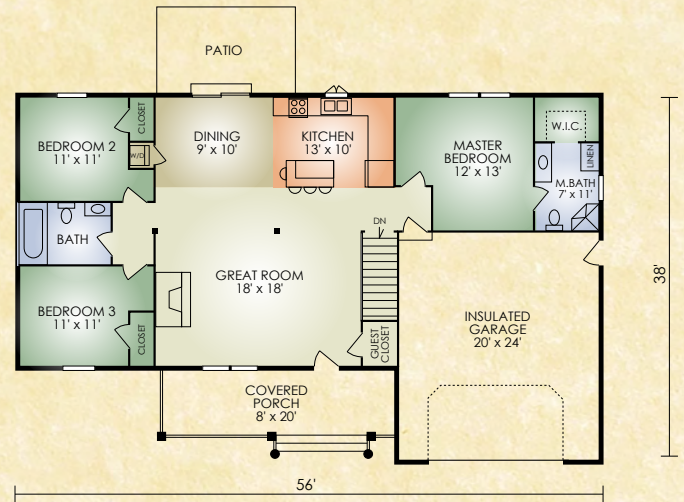


### Fairhaven 2

1,288 sq. ft.

3 BR/2 BA

A substantially downsized version of the original Fairhaven the popular Fairhaven 2 features the same basic home design but with slightly smaller bedrooms and garage and without a separate laundry room and 1/2 bath. The open-concept great room, dining area and kitchen are also proportionately downsized. This home offers the economy of a smaller ranch with the step-saving convenience of a single floor plan.

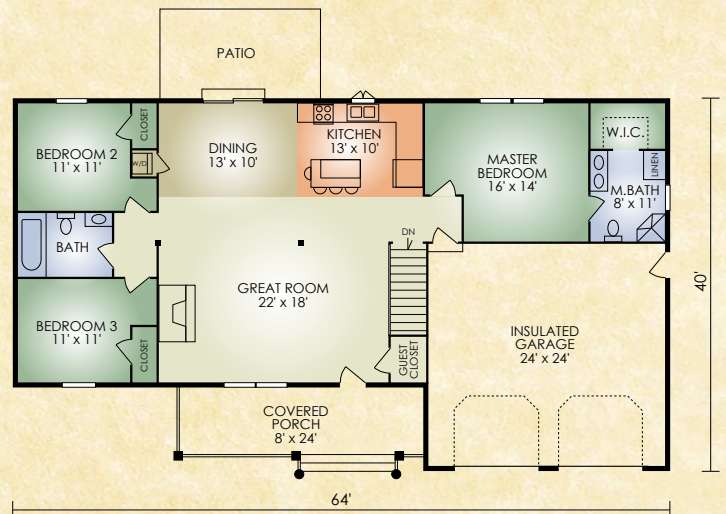


### Fairhaven 3

1,504 sq. ft.

3 BR/2 BA

A smaller version of the popular Fairhaven, the Fairhaven 3 features the same basic home design but without a separate laundry room and 1/2 bath. The popular open-concept great room, dining area and bedrooms have been resized. This home offers outstanding value and convenience for the money!



# HOCHSTETLER

LOG HOMES DONE RIGHT

552 St. Rt. 95, Loudonville, Ohio  
800.368.1015