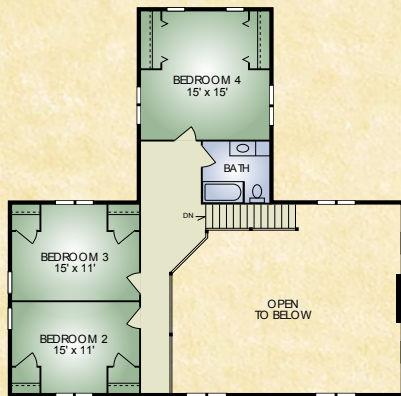


Farmhouse

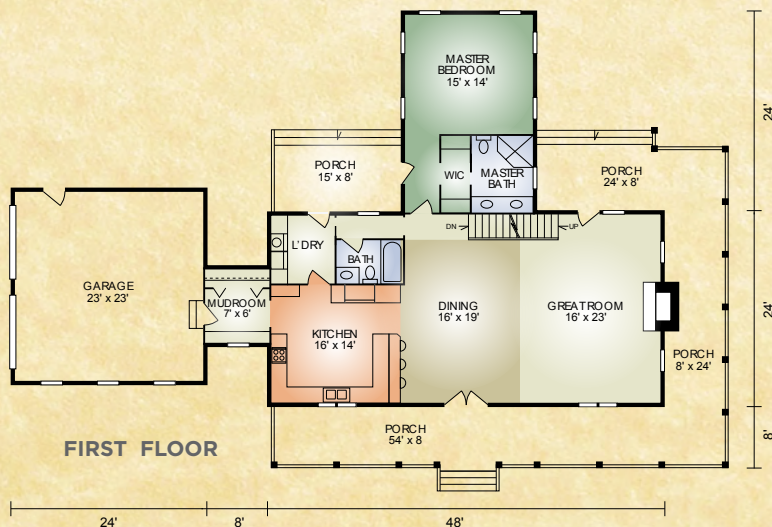
2,516 sq. ft.
4 BR / 3 BA



SECOND FLOOR



FIRST FLOOR



The Farmhouse provides log home living at the next level. On the exterior, the stark contrasting colors and natural timber posts provide a modern-farmhouse appearance with a country vibe. The beauty of this classic home is not only on the exterior; it will ingratiate you as you step inside. The great-room makes the stresses of the day disappear as you relax in your favorite chair with the fire crackling in the fireplace. A massive structural timber frame truss dramatizes the cathedral ceiling above. The kitchen and dining area is designed to cook for a large family and guests. The laundry is conveniently located close to the kitchen with access to the back porch. The Master Bedroom has its own bath, walk in closet and porch for the hot tub or late evening relaxation. Upstairs there are 3 additional bedrooms and a bath. Choose this home for the true country lifestyle... at its best.

A full set of blueprints of this plan is available. Photo and floor plans may differ slightly from actual blueprints.



HOCHSTETLER

LOG HOMES DONE RIGHT

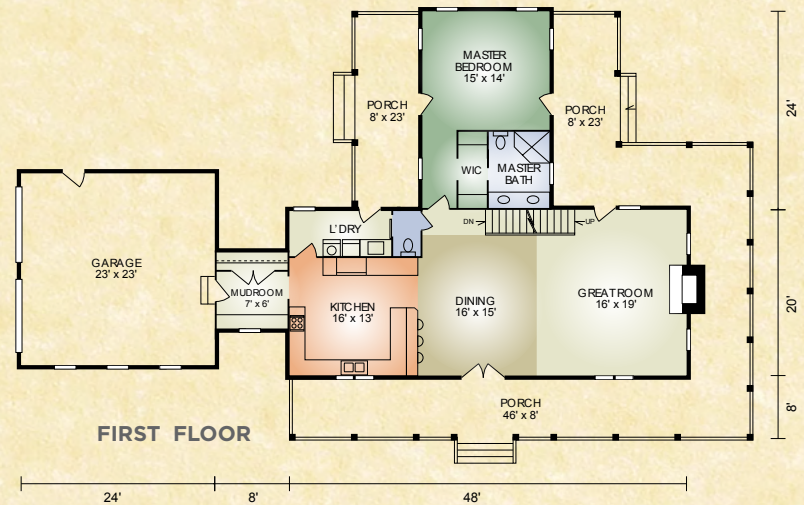
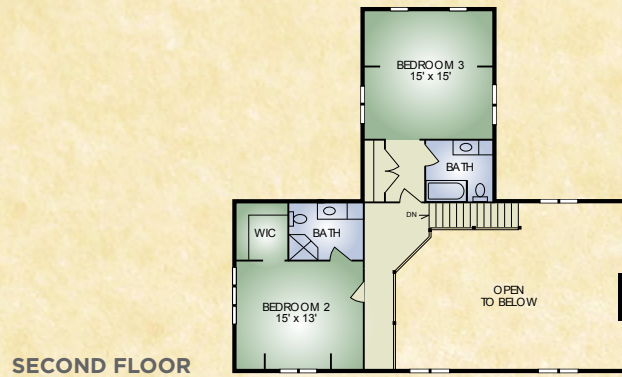
552 St. Rt. 95, Loudonville, Ohio
800.368.1015

Farmhouse 2

2,244 sq. ft.

3 BR/3-1/2 BA

The Farmhouse 2 is very similar layout to Farmhouse only in a smaller footprint. Some extra features this plan has are the larger porches off the Master Bedroom and the private baths in each bedroom upstairs.



HOCHSTETLER

LOG HOMES DONE RIGHT

552 St. Rt. 95, Loudonville, Ohio
800.368.1015