

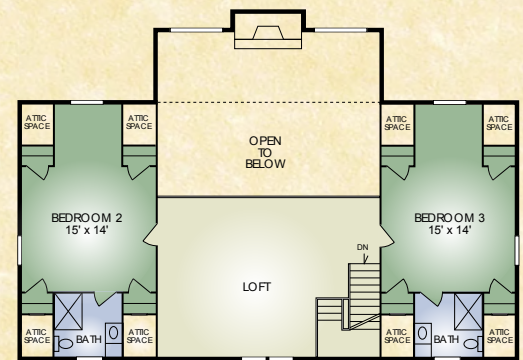
Grand Teton

3,440 sq. ft.
3 BR / 3-1/2 BA

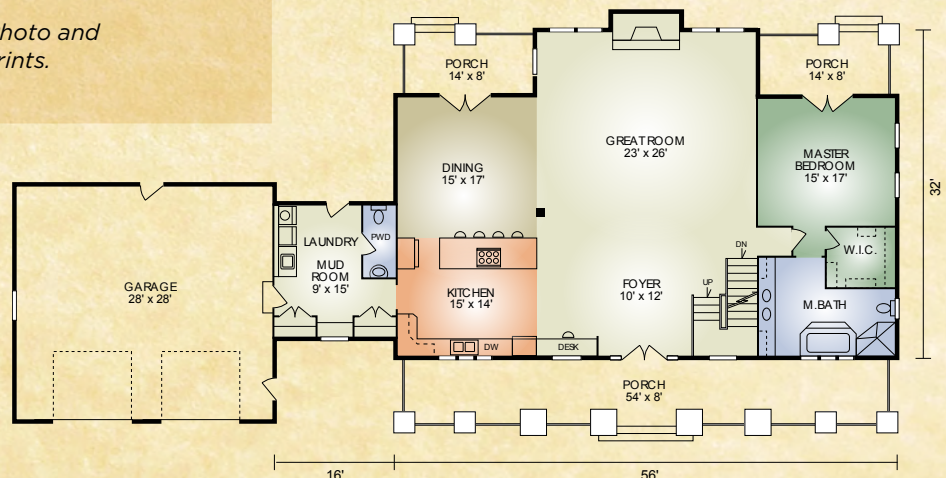


The Grand Teton resonates the classic craftsman's architectural style. An attractive characteristic that comes natural with a log home. With its full-length front porch, massive exposed beams in the great room, the home is a testament to a classic, secure and comfortable lifestyle. It features a large, first floor master suite with a large walk-in closet and its own private porch. The chef size kitchen is truly the heart of this majestic home. Upstairs, the loft offers a grand view of the great room with large, stone fireplace and the spacious entry. Two additional bedrooms each with their own bath and plenty of closet space provide room for guests. The oversized garage provides ample room for a workbench and lawn equipment.

A full set of blueprints of this plan is available. Photo and floor plans may differ slightly from actual blueprints.



SECOND FLOOR



FIRST FLOOR



HOCHSTETLER
LOG HOMES DONE RIGHT

552 St. Rt. 95, Loudonville, Ohio
800.368.1015