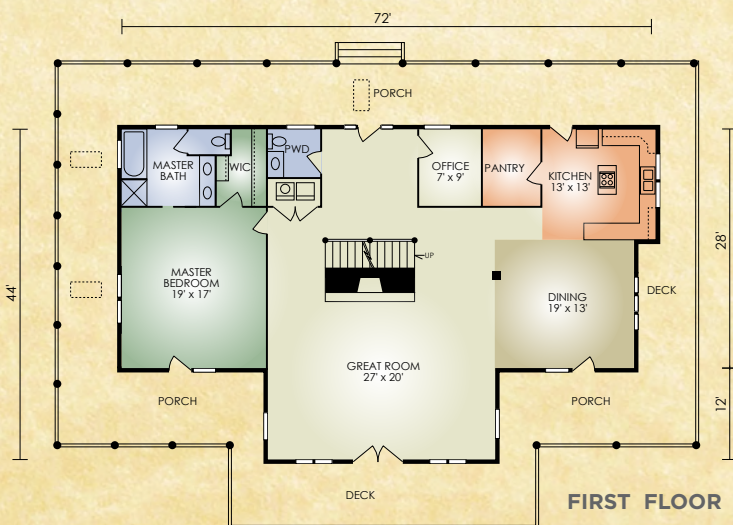
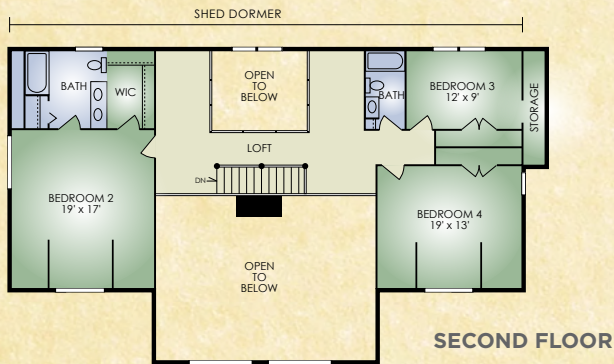


# Heritage

3,580 sq. ft.  
4 BR / 3-1/2 BA



Welcome to the majestic and elegant Heritage! From the moment you step through the door you'll be captivated by the openness and rugged demeanor of this classic beauty. Outside, it features the popular wraparound porch with skylights, expansive A-framed window flanked by dormers and practical walkout basement. Inside, the great room features an enormous stone fireplace and soaring cathedral ceiling with massive timbers reminiscent of early Adirondack log homes. Contemporary, step-saving touches include the first floor office, laundry room and master bedroom with attached walk-in closet and spacious master bath. A beautiful upscale home for those that truly appreciate the finer things in life!

*A full set of blueprints of this plan is available. Photo and floor plans may differ slightly from actual blueprints.*



**HOCHSTETLER**  
LOG HOMES DONE RIGHT

552 St. Rt. 95, Loudonville, Ohio  
800.368.1015

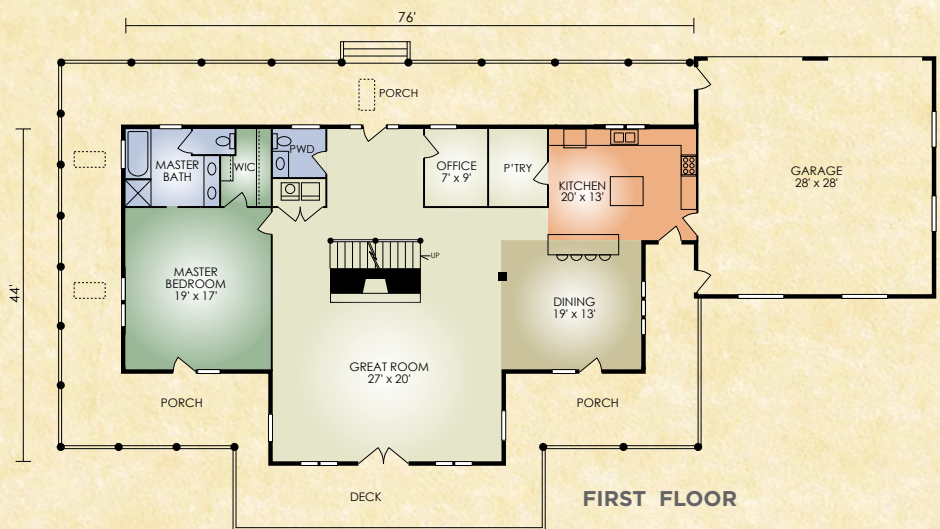
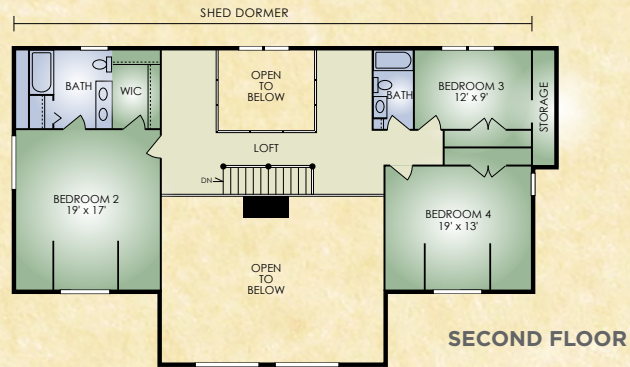


## Heritage 2

3,636 sq. ft.

4 BR/3-1/2 BA

The Heritage 2 has the addition of a spacious 2 car garage, conveniently connected to the kitchen.



**HOCHSTETLER**  
LOG HOMES DONE RIGHT

552 St. Rt. 95, Loudonville, Ohio  
800.368.1015