

# HONEY CREEK II

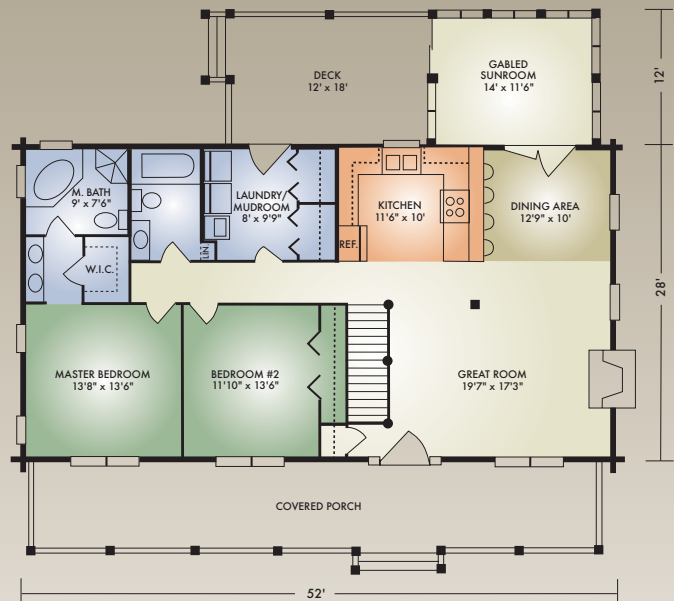
1632 sq. ft.

2 Bedrooms / 2 Baths



The Honey Creek II is an enlarged version of our popular Honey Creek with the added convenience of a separate laundry/mudroom and sunroom. It also features a master bath with walk-in closet and master bath large enough for a hot tub.

The open-concept great room has an exposed timber ceiling and fireplace. The kitchen has a raised bar and the dining area opens to a gabled sunroom and deck which makes hosting friends a breeze. You'll love the step-saving convenience of this ranch with the heart-warming ambience of an authentic log home.



A full set of blueprints of this plan is available.  
Artist's renderings and floor plans may differ slightly from actual blueprints.

Hochstetler Milling, Ltd.  
552 St. Rt. 95, Loudonville, OH 44842  
419-368-0004 or 800-368-1015