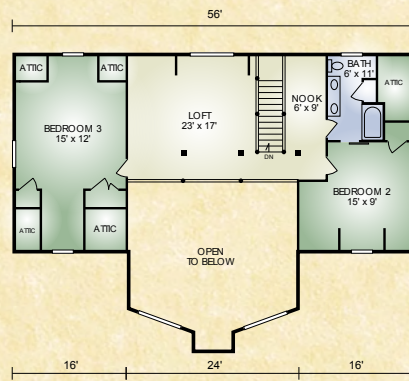
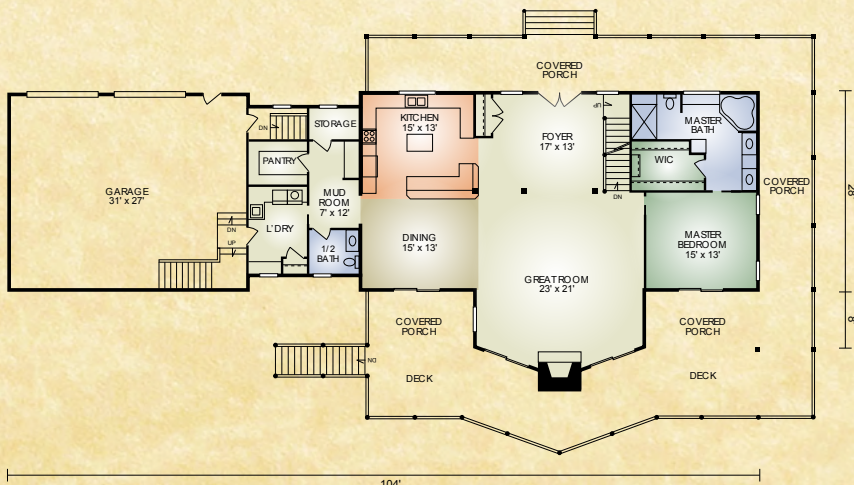


# Lake View

3,182 sq. ft.  
3 BR / 2-1/2 BA



**SECOND FLOOR**



**FIRST FLOOR**

From curb appeal to jaw dropping interior the Lake View has it. As you enter the foyer area your eyes will be drawn to the huge timbers that soar above the cathedral great-room along with the massive stone fireplace. To your right is the chef style kitchen that offers plenty of room to cook your favorite dinner. It features a large, first floor master bedroom with master bath and a large walk-in closet. Two additional bedrooms, a bath and a loft area are located upstairs. Pantry, office, 1/2 bath, mudroom and laundry are in the breezeway which leads to the 2-car garage. Let this be your next home!

*A full set of blueprints of this plan is available. Photo and floor plans may differ slightly from actual blueprints.*



**HOCHSTETLER**  
LOG HOMES DONE RIGHT

552 St. Rt. 95, Loudonville, Ohio  
Call 800.368.1015