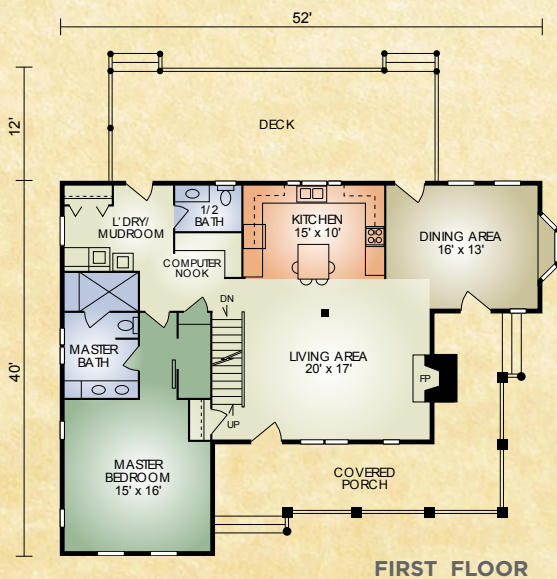
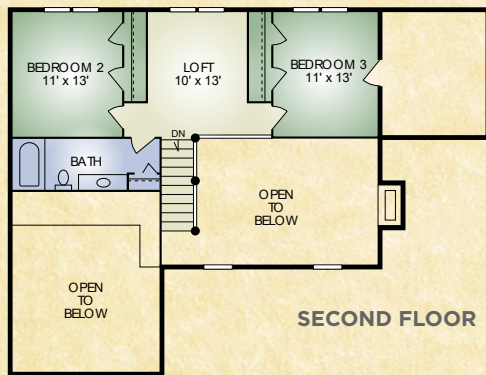


Loudonville

2,232 sq. ft.
3 BR / 2 BA



The Loudonville features dramatic curb appeal with its wraparound porch, dining area bay window and timbered gable. Inside, the full timbered, open-concept great room and stone fireplace greet your guests. Plus, you'll love the step-saving convenience of the first floor laundry and computer nook off the kitchen. The showpiece master bedroom includes a walk-in closet and master bath with walk-in shower. The dining area opens to the large rear deck and affords plenty of space for hosting parties and social events. You'll love this thoughtfully designed plan for its practicality and versatility.

A full set of blueprints of this plan is available. Photo and floor plans may differ slightly from actual blueprints.



HOCHSTETLER
LOG HOMES DONE RIGHT

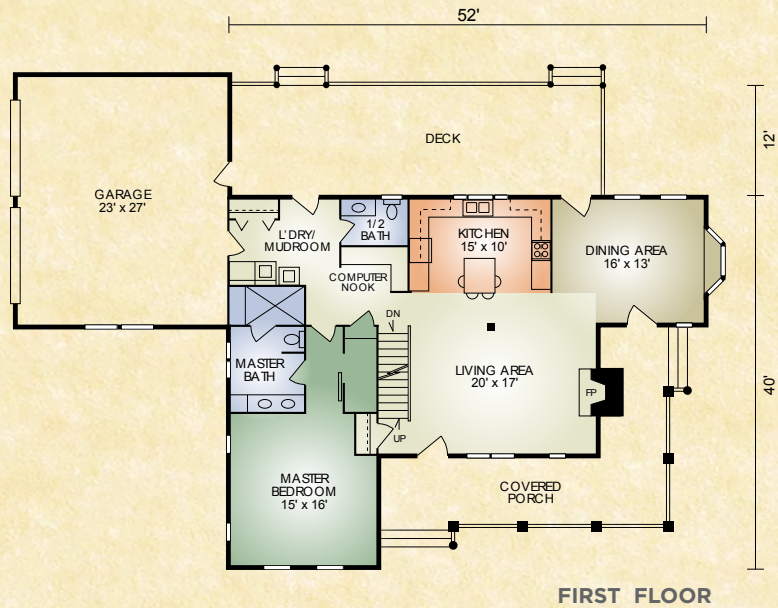
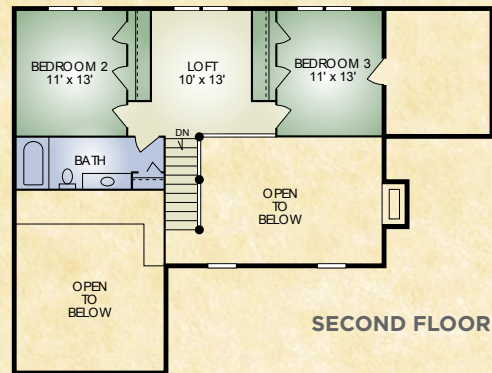
552 St. Rt. 95, Loudonville, Ohio
800.368.1015

Loudonville 2

2,232 sq. ft.

3 BR/2 BA

The Loudonville 2 features the exact layout of the dramatic Loudonville with the addition of a spacious 2 car garage.



HOCHSTETLER

LOG HOMES DONE RIGHT

552 St. Rt. 95, Loudonville, Ohio
800.368.1015