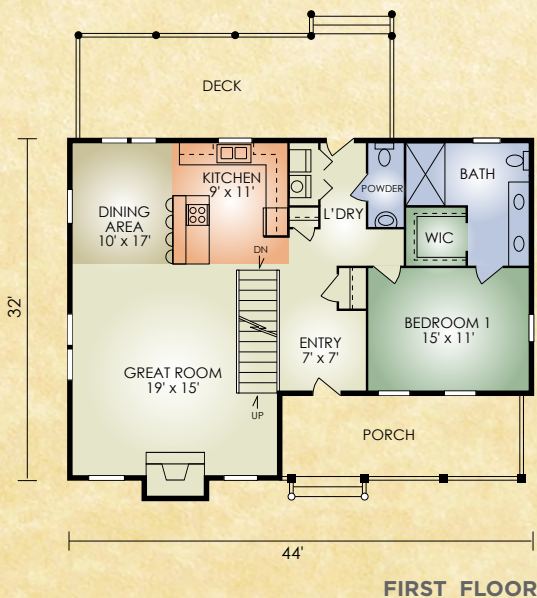
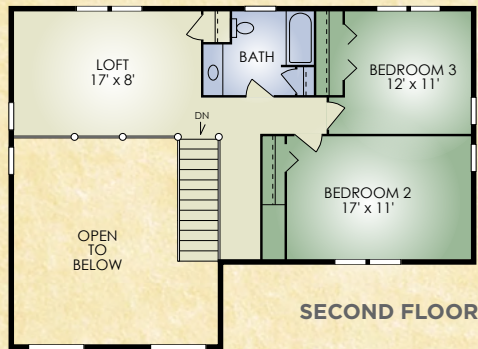


# Millwood

2,020 sq. ft.  
3 BR / 2 BA



The Millwood is a unique blend of the contemporary with the timeless charm of the traditional log home. It features the popular open-concept great room with fireplace and exposed timbered ceiling, inviting front porch, and large rear deck. Plus, convenient contemporary touches like the kitchen with island and raised serving bar, first-floor laundry/mudroom, and walk-in closet off the bedroom. And, upstairs a large open loft offers an expansive view of the fireplace and great room below. You'll love the step-saving convenience and ambience of this dream home.

*A full set of blueprints of this plan is available. Photo and floor plans may differ slightly from actual blueprints.*



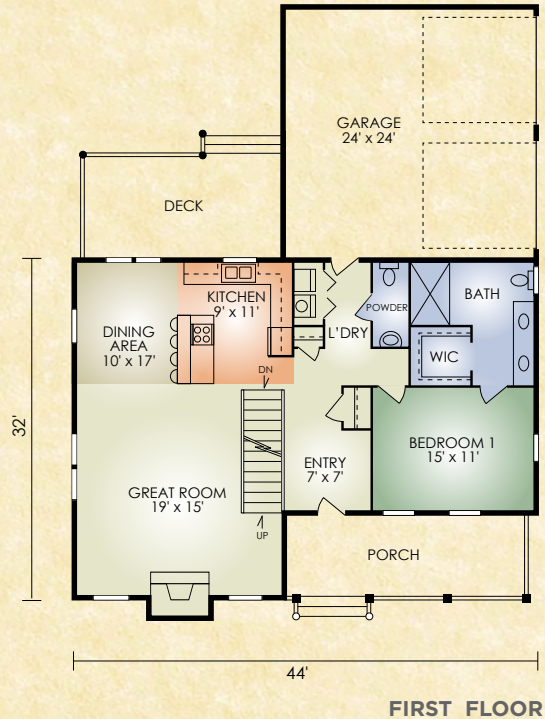
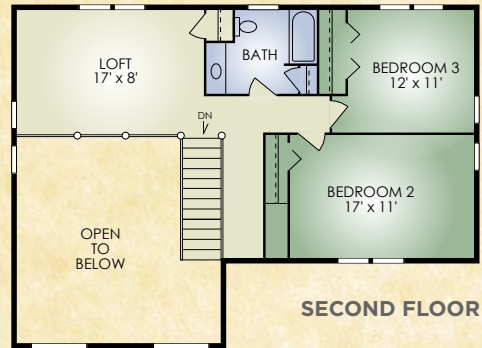
**HOCHSTETLER**  
LOG HOMES DONE RIGHT

552 St. Rt. 95, Loudonville, Ohio  
800.368.1015

### Millwood 2

2020 sq. ft.  
3 BR/2 BA

The Millwood 2 is same as the original Millwood with the addition of a 2-car garage on the back.



# HOCHSTETLER

LOG HOMES DONE RIGHT

552 St. Rt. 95, Loudonville, Ohio  
800.368.1015