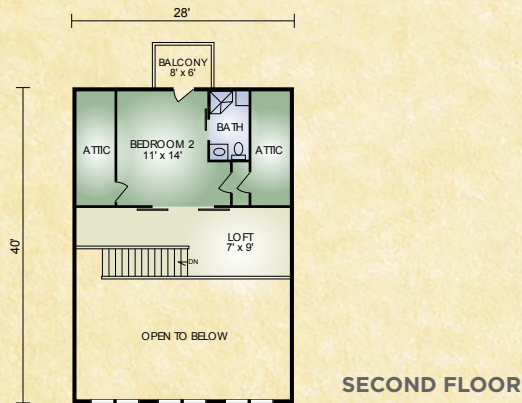


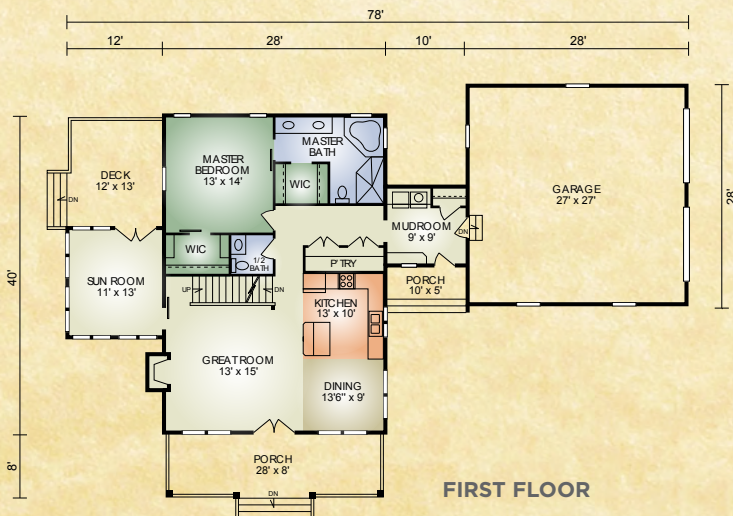
Mohican

1,752 sq. ft.
2 BR / 2-1/2 BA



On the lake, mountain, or in the woods the Mohican offers the perfect way to enjoy your view. Large gable glass in the great-room brings the outdoors in. The sunroom is the place to enjoy your morning coffee while reading or watching nature. The master suite has 2 walk-in closets and a full bath with room for a garden tub. Upstairs the additional guest bedroom has its own full bath and a private balcony for morning relaxation. Capture your view with this home!

A full set of blueprints of this plan is available. Photo and floor plans may differ slightly from actual blueprints.



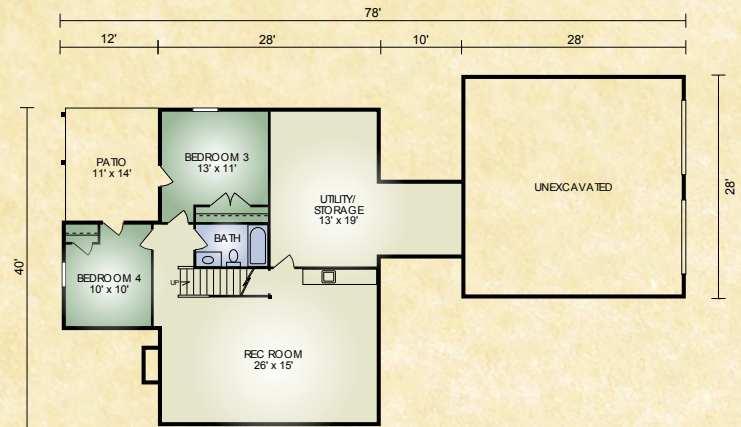
HOCHSTETLER
LOG HOMES DONE RIGHT

552 St. Rt. 95, Loudonville, Ohio
Call 800.368.1015

Mohican (Optional Basement)

Additional 1,012 sq. ft.
2 BR/1 BA

Optional basement adds 1,012 sq. ft.
2 bd, 1 ba, recreation area, and space
for storage.



HOCHSTETLER
LOG HOMES DONE RIGHT

552 St. Rt. 95, Loudonville, Ohio
800.368.1015