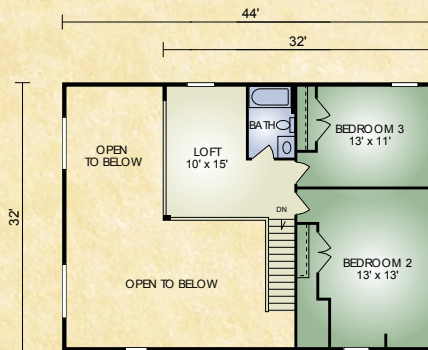
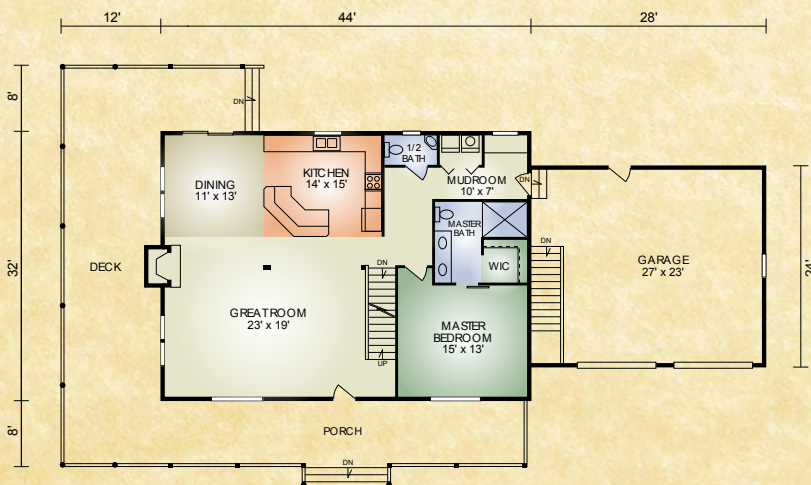


Pennsylvania

2,127 sq. ft.
3 BR / 2-1/2 BA



SECOND FLOOR



FIRST FLOOR

Coziness is what describes the Pennsylvania home. Imagine relaxing in the great room after a long day at work, with the large stone fireplace, timbered cathedral ceiling and the large gable windows bringing the outdoors in. The openness between the kitchen, dining and great room keeps the conversations flowing. The Master Suite is on the main-floor with washer and dryer conveniently close by. Upstairs are 2 additional bedrooms, full bath and loft area with space for an office or hobby area. Let this be your next home.

A full set of blueprints of this plan is available. Photo and floor plans may differ slightly from actual blueprints.



HOCHSTETLER
LOG HOMES DONE RIGHT

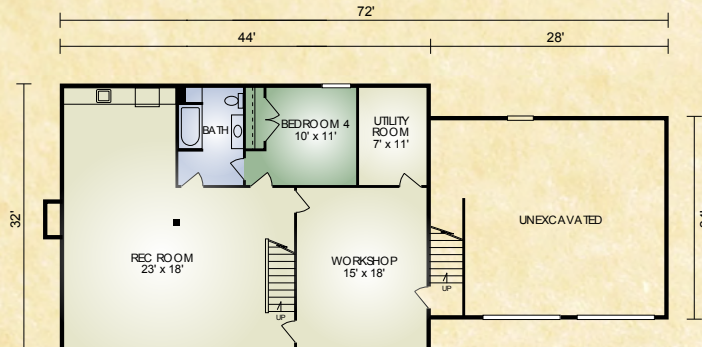
552 St. Rt. 95, Loudonville, Ohio
Call 800.368.1015

Pennsylvania (Optional Basement)

Additional 1,304 sq. ft.

1 BR/1 BA

Optional basement adds 1,304 sq. ft.
1 bd, 1 ba, recreation area, workshop
and utility room.



HOCHSTETLER

LOG HOMES DONE RIGHT

552 St. Rt. 95, Loudonville, Ohio
800.368.1015