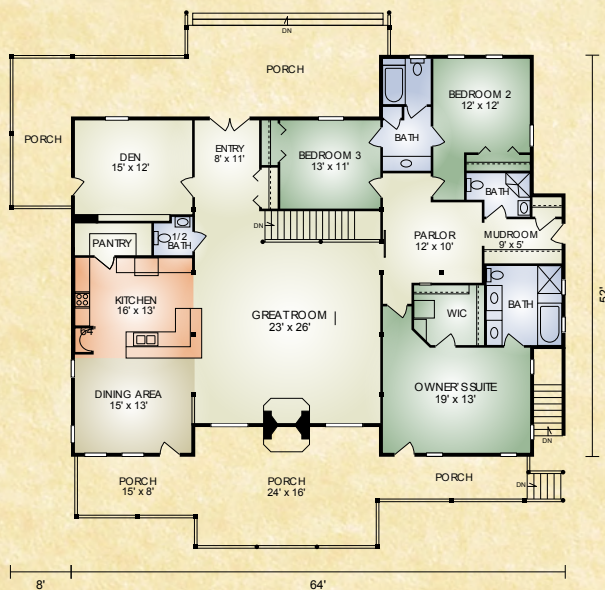


Sloane Ranch

2,784 sq. ft.
3 BR / 3-1/2 BA



The Sloane Ranch is a luxury ranch log and timber style home with everything you need on one floor. Huge timber trusses soar above the great-room. The double sided fireplace in the great room makes the covered porch a perfect place for relaxation. A spacious chef style kitchen makes cooking the Thanksgiving dinner enjoyable. Master Suite has a large walk-in closet and the Bath has space for a garden tub. There are two additional bedrooms with a Jack & Jill bath. The den is the perfect place for your library or home office. Build your dream home!

A full set of blueprints of this plan is available. Photo and floor plans may differ slightly from actual blueprints.



HOCHSTETLER

LOG HOMES DONE RIGHT

552 St. Rt. 95, Loudonville, Ohio
Call 800.368.1015

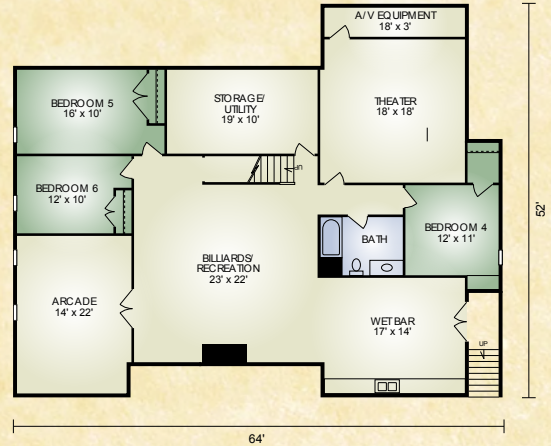
Sloane Ranch

Optional Basement

Sloane Ranch (Optional Basement)

Additional 2,566 sq. ft.
3 BR/1 BA

Optional basement adds 2,566 sq. ft. 3 bd, 1 ba, wet bar, recreation area, theater room, arcade room, and storage/utility room.

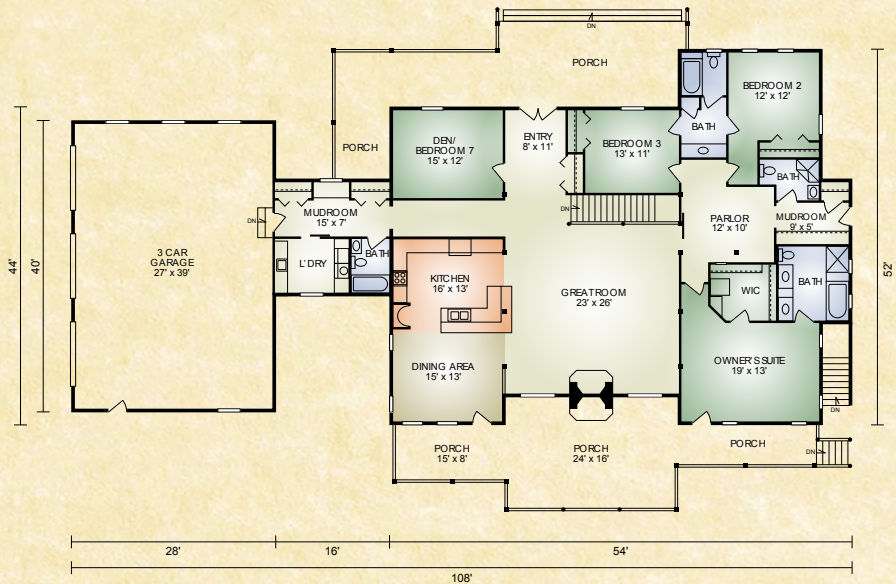


Optional Plans

Sloane Ranch 2

3,040 sq. ft.
3 BR/3-1/2 BA

Sloane Ranch 2 is similar to the original with the addition of a breezeway with a full bath, laundry, mudroom and a 3-car garage.



Sloane Ranch 3

3,040 sq. ft.
3 BR/3-1/2 BA

Sloane Ranch 3 home has the same layout as #2 with the addition of a pool house.

