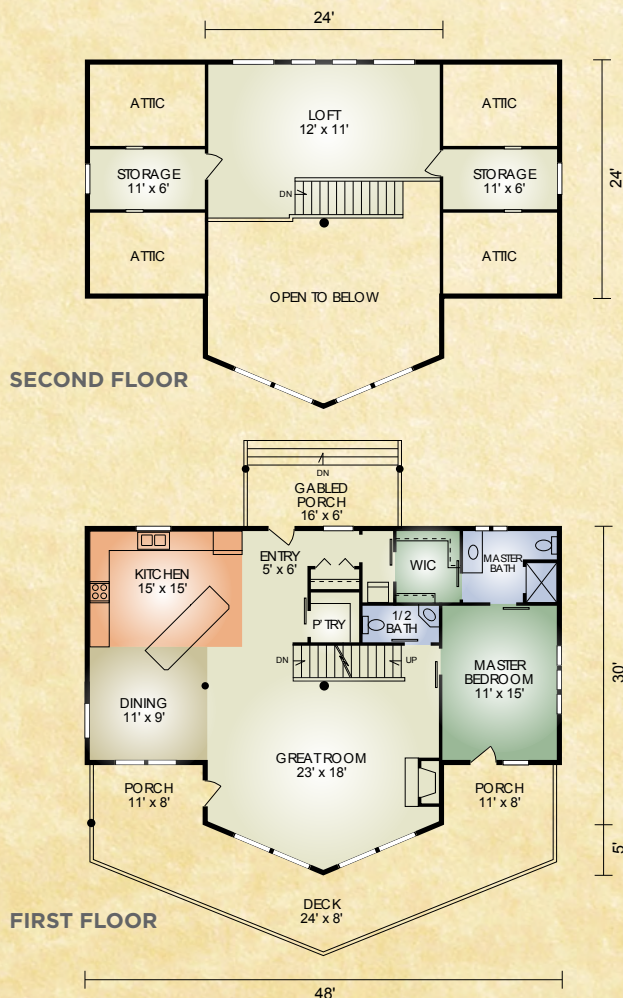


# Trout Run

1,570 sq. ft.  
1 BR / 1-1/2 BA



Dramatic describes the Trout Run home. The prow with large gable windows bring the outdoors into the great room, making it the perfect spot to spend your weekend, or come home to every day. With the open kitchen and dining area the cook will not feel left out of the great room banter. The master suite has a large walk-in closet with the laundry conveniently close by. Upstairs there is a large loft area that could be made into an extra guest bedroom, office space or rec area. Go on vacation every day, build the Trout Run.

*A full set of blueprints of this plan is available. Photo and floor plans may differ slightly from actual blueprints.*



**HOCHSTETLER**  
LOG HOMES DONE RIGHT

552 St. Rt. 95, Loudonville, Ohio  
Call 800.368.1015

# Trout Run

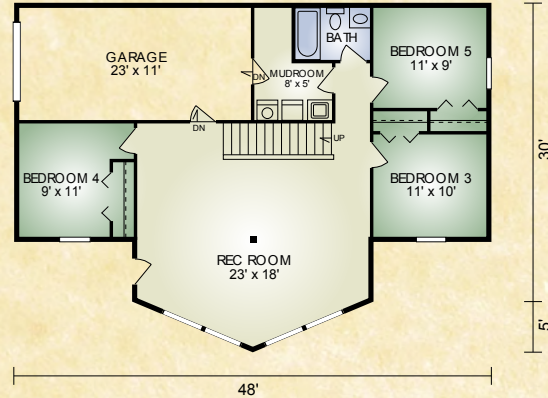
## Optional Basement

### Trout Run (Optional Basement)

Additional 1,073 sq. ft.

3 BR/1 BA,

Optional basement adds 1,073 sq. ft. 3 bd. 1 ba, recreation room and 1-car garage.



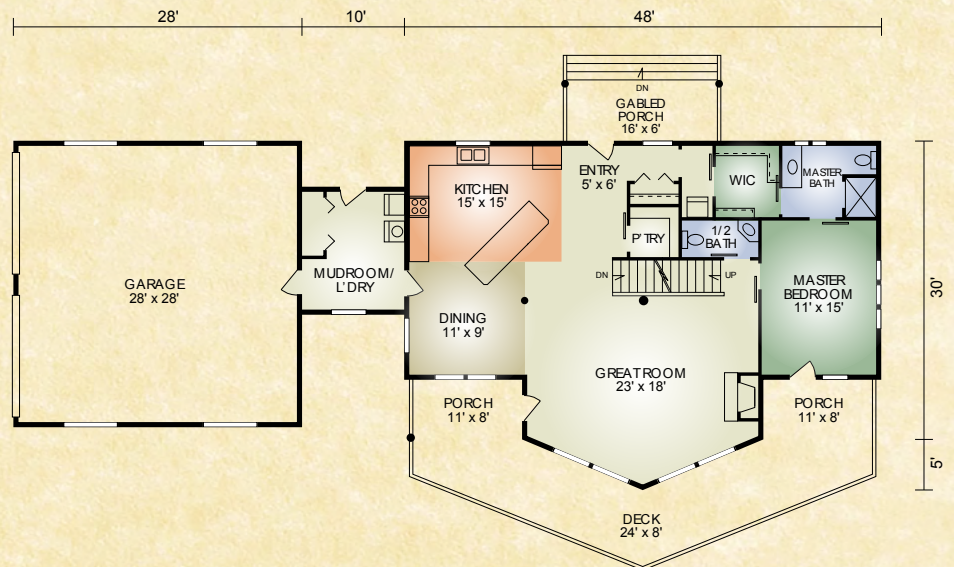
## Optional Plan

### Trout Run 2

1,570 sq. ft.

1 BR/1-1/2 BA

Trout Run 2 has similar layout to the original with the addition of a breezeway and 2-car garage.



# HOCHSTETLER

LOG HOMES DONE RIGHT

552 St. Rt. 95, Loudonville, Ohio  
800.368.1015