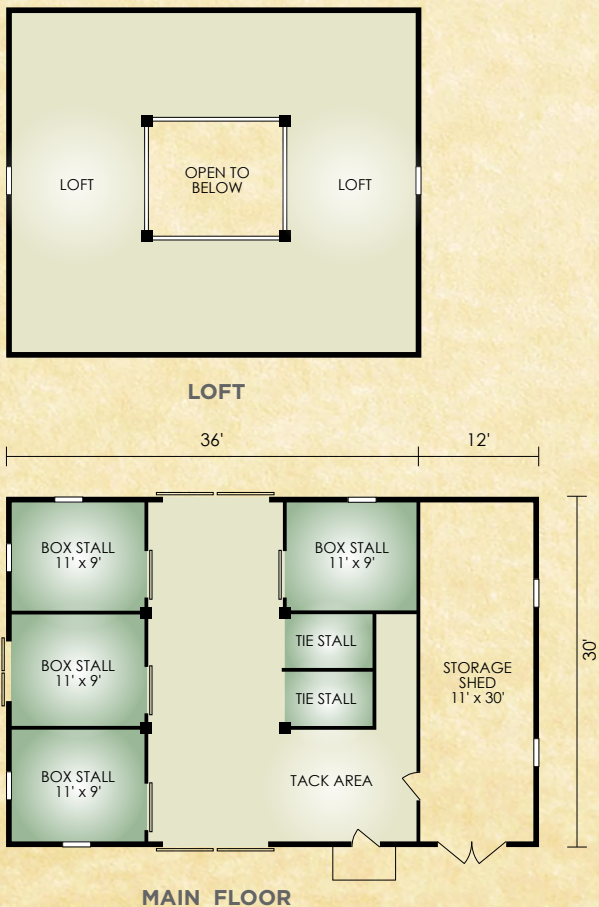


Vermont Barn

1,080 sq. ft.- Main Floor / 960 sq. ft. - Loft
360 sq. ft.- Shed / 2,340 sq. ft. - Total



The Vermont is a classic replica of the typical barn found in New England in the early 1900's. It features 6x12 tongue-and-groove square logs with chinking and authentic board-and-batten gables. The 1080 sq. ft. main floor includes a spacious 12x30 central area, 4 box stalls, 2 tie stalls and tack area. The loft offers an additional 960 sq. ft. of floor space. The adjoining storage shed is ideal for wagons, carriages and such.

A full set of blueprints of this plan is available. Photo and floor plans may differ slightly from actual blueprints.



HOCHSTETLER
LOG HOMES DONE RIGHT

552 St. Rt. 95, Loudonville, Ohio
800.368.1015

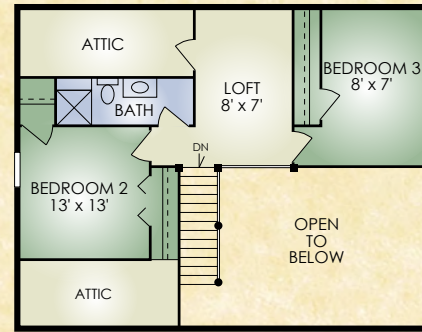
Vermont Barn - House Option

Vermont Barn - House Option

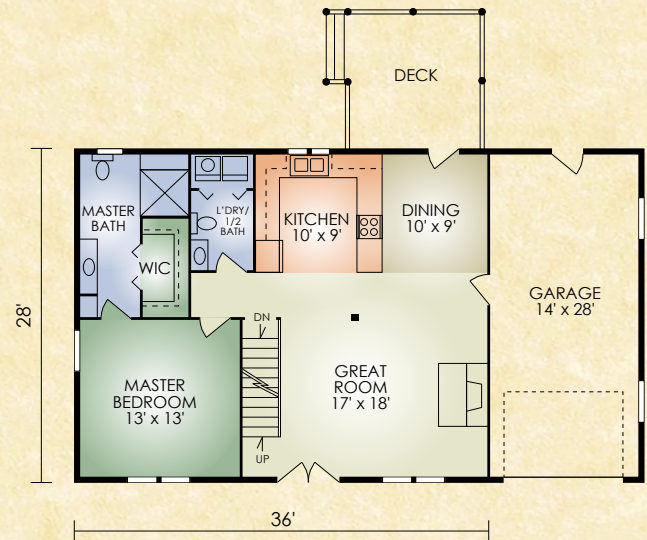
1,366 sq. ft.
3 BR/2-1/2 BA

The Vermont Barn house option has the exterior look of a barn with the floorplan laid out for a three-bedroom home. This plan offers most of the features of the Brookside home design including open-concept great room with stone chimney and timbered ceiling, master bedroom with adjoining master-bath and walk-in closet, and first floor laundry. A 1-car garage is included in this well thought-out plan.

Upstairs, there are two additional bedrooms and a bath, plus an open loft which overlooks the great room. A practical home layout, with-in a rustic barn appearance exterior.



SECOND FLOOR



FIRST FLOOR



HOCHSTETLER

LOG HOMES DONE RIGHT

552 St. Rt. 95, Loudonville, Ohio
800.368.1015