

1663 sq. ft.

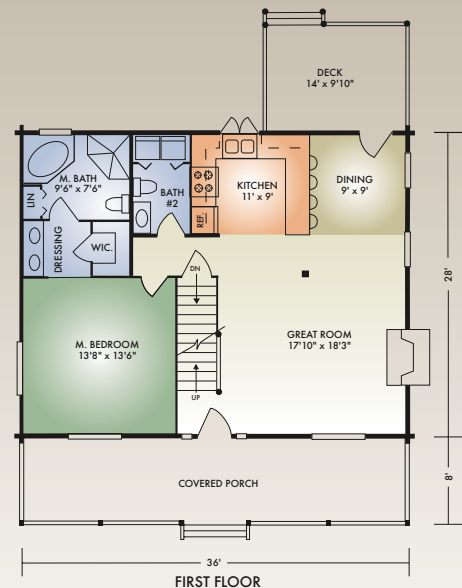
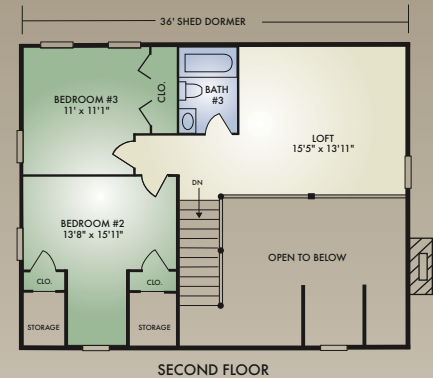
3 Bedrooms / 2 1/2 Baths



The Hudson is one of our most versatile floor plans and also one of our most affordable. It has the same room layout as our model home, the McKay, in a slightly smaller size. It features the traditional full length front porch, spacious open concept great room with exposed timbered ceiling, master bedroom with adjoining dressing area/walk-in closet, master bath with room for a hot tub and a convenient first-floor laundry with a half bath.

Upstairs, there are two more bedrooms with room for an office or sewing room in the open loft.

A rear deck conveniently located off the dining area makes hosting family and friends a pleasure.



A full set of blueprints of this plan is available. Artist's renderings and floor plans may differ slightly from actual blueprints.

Hochstetler Milling, Ltd.
552 St. Rt. 95, Loudonville, OH 44842
419-368-0004 or 800-368-1015