

JOHNSVILLE 1

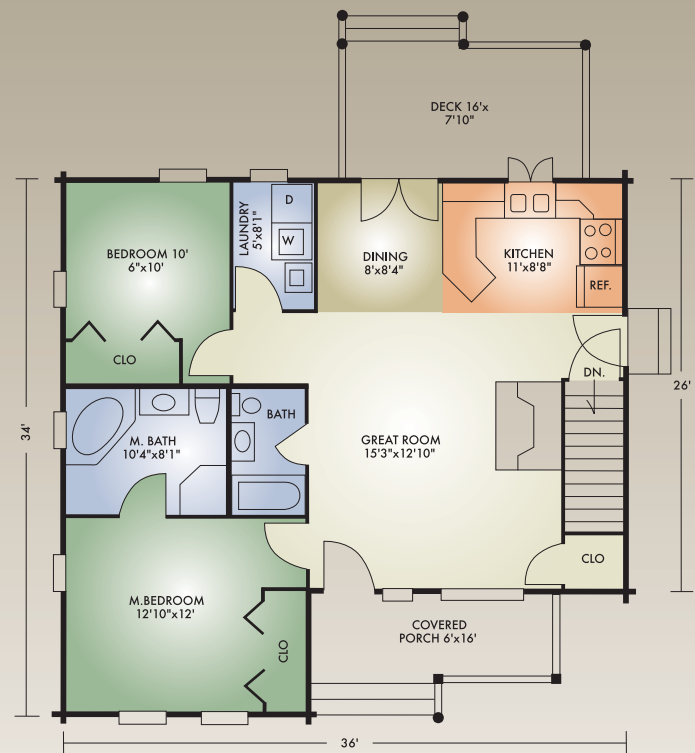
1064 sq. ft.

2 Bedrooms / 2 Baths



The Johnsville 1 is an affordable ranch for anyone looking for the convenience of a single floor and the beauty and cost-savings of a log home.

Features include an open-concept great room with a cathedral ceiling and exposed timbers, master bedroom with over sized master bath, and convenient first-floor laundry. Outside, a 16' timbered front porch greets visitors while a rear deck off the dining area offers a place for the barbeque. A second bedroom could be used as an office. If you need additional bedrooms, the Johnsville 2 has three. If a basement is not needed you can eliminate the stairs for additional storage or to enlarge the great room.



A full set of blueprints of this plan is available.
Artist's renderings and floor plans may differ slightly from actual blueprints.

Hochstetler Milling, Ltd.
552 St. Rt. 95, Loudonville, OH 44842
419-368-0004 or 800-368-1015