

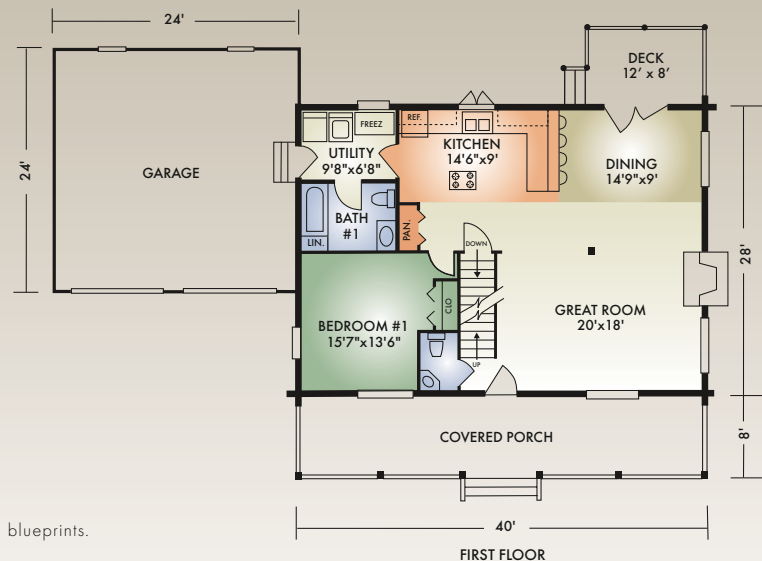
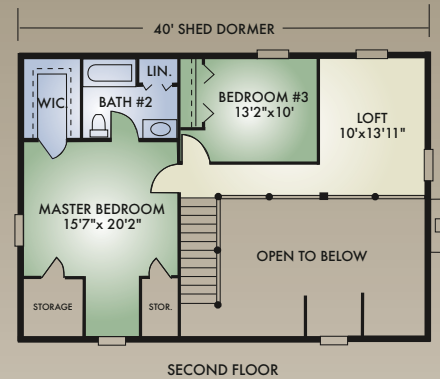
MANCHESTER

1844 sq. ft.

3 Bedrooms / 2 1/2 Baths



The Manchester is one of our most popular floor plans and unlike most models, has the master bedroom on the second floor. This home offers the traditional full-length front porch, open-concept great room with exposed timbered ceiling, attached garage, and full-length shed dormer. Plus, it has convenient contemporary touches like the first-floor laundry room, master bedroom with walk-in closet and large master bath, and spacious kitchen with pantry and an island for the chef of the house. And, for the growing family, a fourth bedroom could be added in the loft. This traditional beauty offers both practicality and convenience.



A full set of blueprints of this plan is available. Artist's renderings and floor plans may differ slightly from actual blueprints.

Hochstetler Milling, Ltd.
552 St. Rt. 95, Loudonville, OH 44842
419-368-0004 or 800-368-1015