

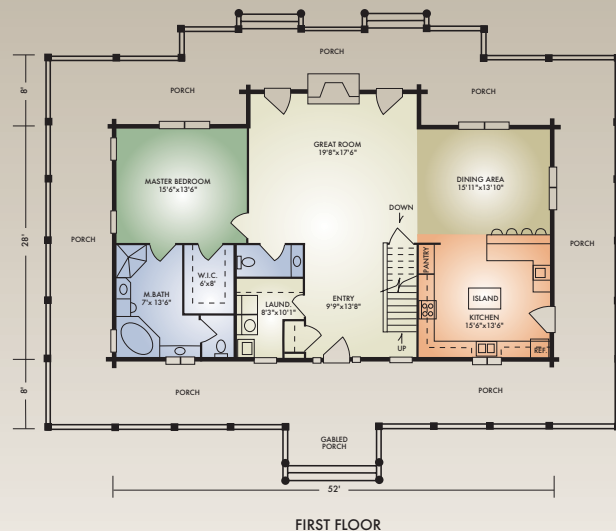
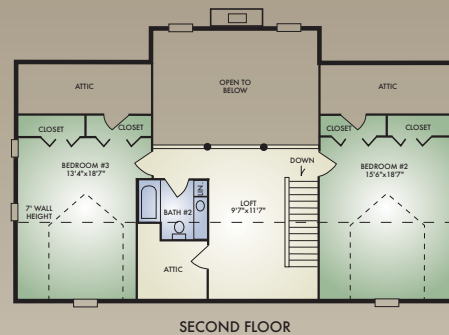
2312 sq. ft.

3 Bedrooms / 2 1/2 Baths



The Sweetwater offers all the amenities of an upscale home in a convenient, efficient floor plan. This impressive home features a separate entry; spacious, open-concept great room with exposed timber ceiling and impressive fireplace; chef-size kitchen with built-in pantry and convenient island; first-floor laundry; and large master bedroom with walk-in closet and master bath. Upstairs, there are two large bedrooms and a bath, plus an open loft which overlooks the great room.

Outside, this stylish home with its imposing timbered front gable and wrap-around porch welcomes guests.



A full set of blueprints of this plan is available. Artist's renderings and floor plans may differ slightly from actual blueprints.

Hochstetler Milling, Ltd.  
 552 St. Rt. 95, Loudonville, OH 44842  
 419-368-0004 or 800-368-1015